

USGS MAP  
1" = 1000'±

SITE PLAN TO ACCOMPANY NOTICE OF INTENT FOR  
**TWO PROPOSED BUILDINGS**  
ON PROPERTY IDENTIFIED AS

**369-377 HOLDEN STREET, SHREWSBURY**  
ASSESSORS 07-001000

**116 NORTHEAST CUTOFF, WORCESTER**  
ASSESSORS 52-006-00008

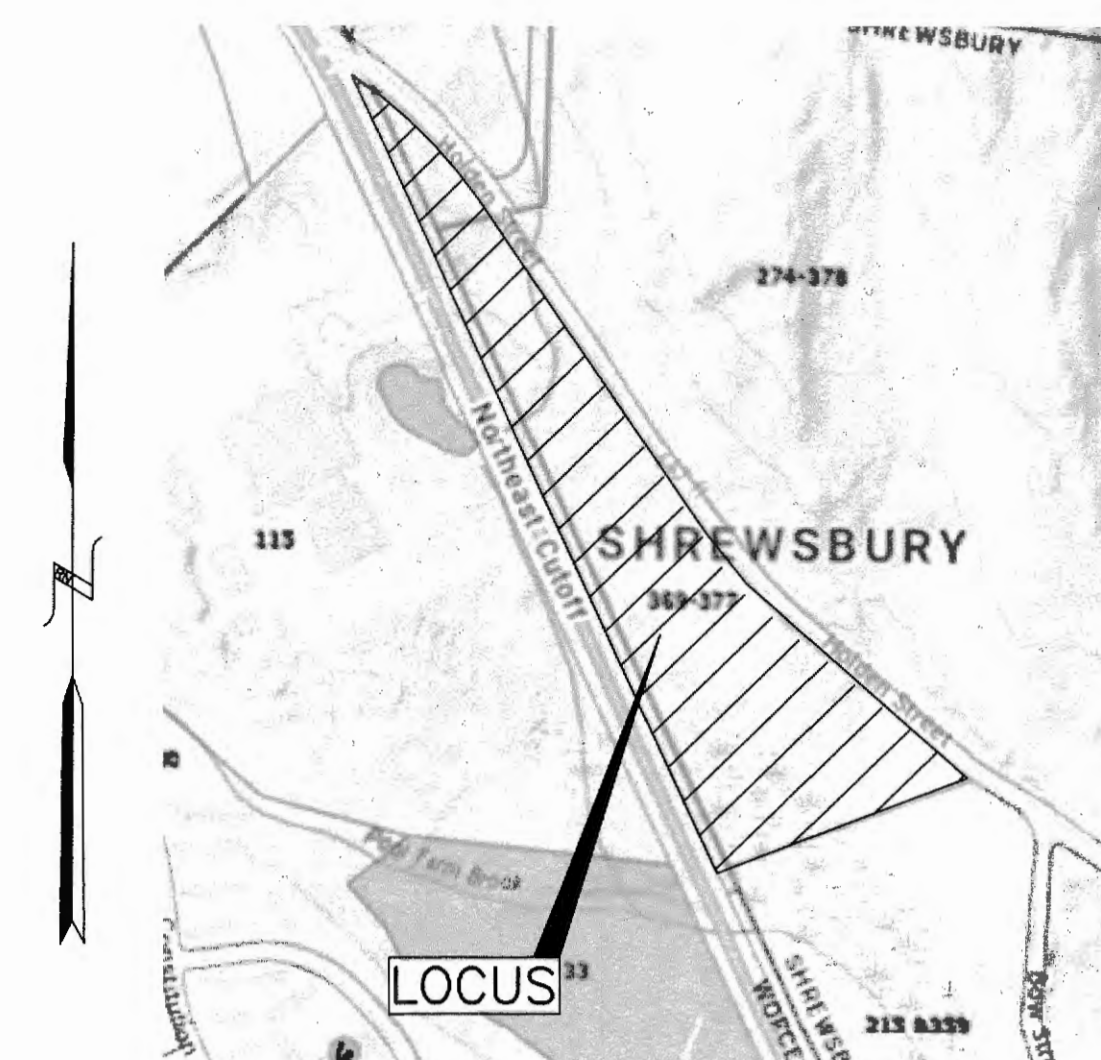
**EAST MOUNTAIN STREET, WEST BOYLSTON**  
ASSESSORS 182-001-000

OWNER/APPLICANT:

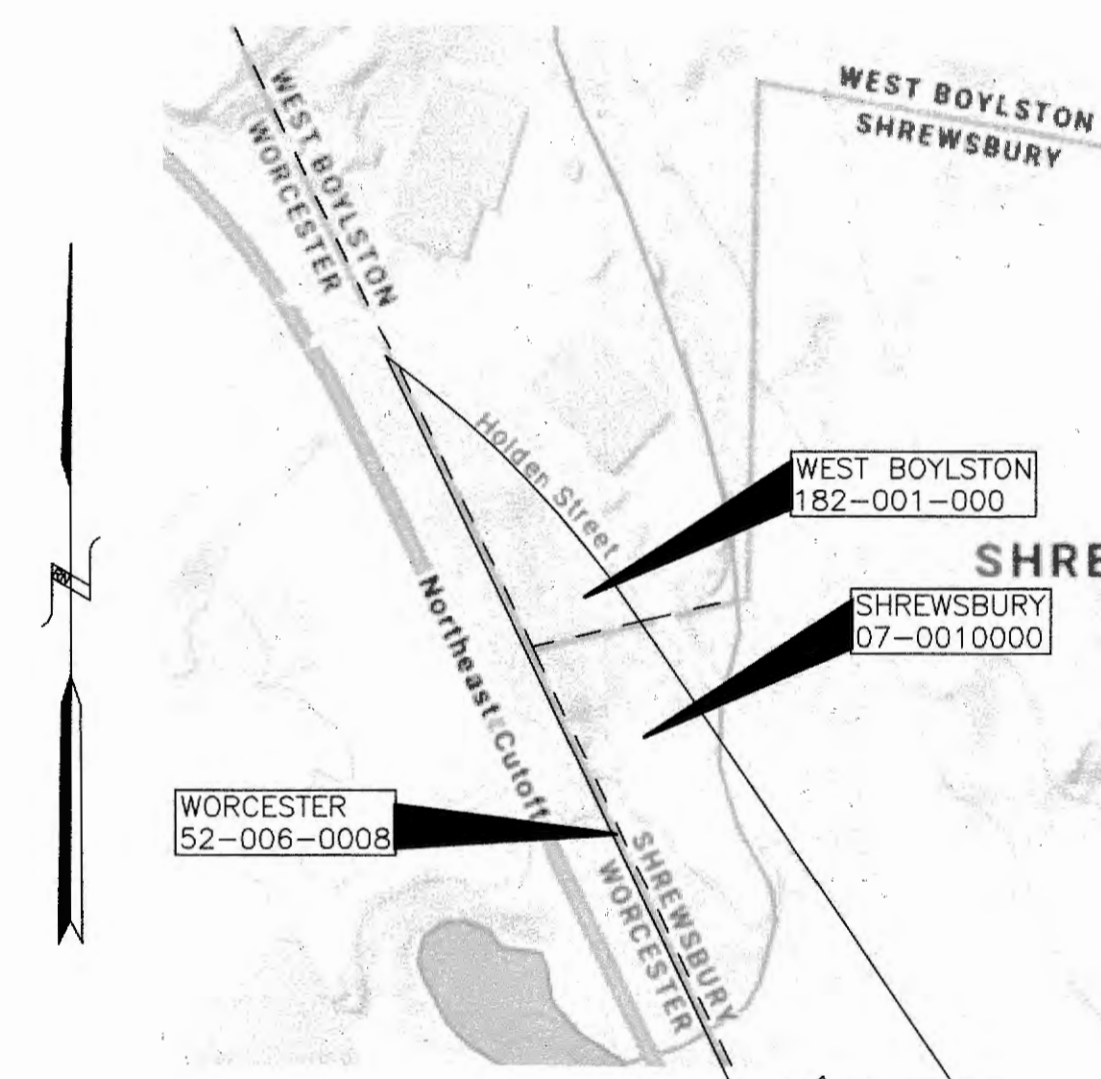
**115 NORTHEAST CUTOFF REALTY TRUST**

1 WEST BOYLSTON STREET, SUITE LL05  
WORCESTER, MA, 01606

DWG. NO. HOLDENSTCURRENT.DWG



LOCUS MAP  
1" = 500'±



ASSESSOR PARCEL MAP  
1" = 250'±

ZONING COMPLIANCE TABLE FOR BUILDINGS IN SHREWSBURY			
LIMITED INDUSTRIAL ZONE II AQUIFER PROTECTION OVERLAY DISTRICT	REQUIRED	PROPOSED LOT 1	PROPOSED LOT 2
MIN. LOT AREA (SF)	80,000	247,635	390,871
MIN. LOT FRONTAGE (FT)	50	1,443	820
MIN. FRONT YARD (FT)	50	59	96
MIN. SIDE YARD (FT)	50	113	79
MIN. REAR YARD (FT)	50	97	54
OPEN SPACE % OF LOT AREA	20	78	75
MAX. LOT COVERAGE (%)	50	22	25
MAX. BUILDING HEIGHT (FT)	50	40	50
MAX. NUMBER BUILDING STORIES	4	1	1
MAX. SEPTIC FLOW (GPD)	110 GPD/10K SF	900 GPD (2,700 ALLOWED)	800 GPD (4,300 ALLOWED)
MAX. IMPERVIOUS AREA WITHOUT SPECIAL PERMIT (SF)	2,500	55,242*	97,557*

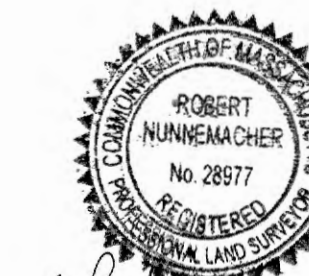
\*SPECIAL PERMIT REQUIRED FROM PLANNING BOARD

PREPARED BY:

**THOMPSON-LISTON ASSOCIATES, INC.**  
Professional Engineers Professional Land Surveyors  
Erosion Control Specialists  
51 Main St. Boylston, MA, 01505  
info@tlainc.net (508) 869-6151



*Patrick J. Kelly*  
9/5/23



*Robert Nunemacher*  
9-5-23

DATE:  
AUGUST 22, 2023

SHEET DIRECTORY

TITLE SHEET	(THIS SHEET)
EXISTING CONDITIONS PLAN	C1.1 - C1.2
SITE LAYOUT PLAN	C2
GRADING & DRAINAGE PLAN	C3
EROSION CONTROL PLAN	C4
UTILITIES PLAN	C5
DETAIL SHEETS	C6.1 - C6.3

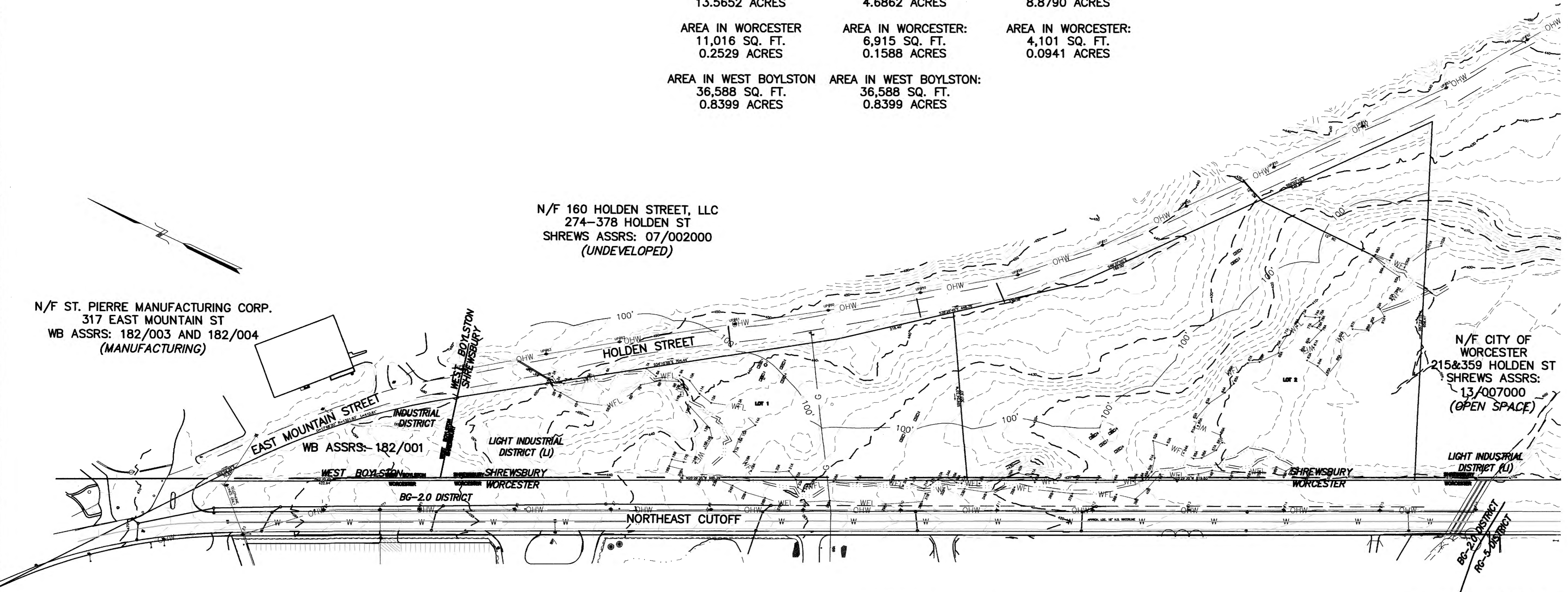


--- KEY ---

---	BROOK OR POND HIGH WATER LINE
---	RIVERFRONT AREA IF PRESENT
---	MEAN ANNUAL HIGH WATER LINE
---	BORDERING VEGETATED WETLAND
---	15' WORC WETLAND BUFFER
---	30' WORC WETLAND BUFFER
---	100' BUFFER ZONE
---	FEMA ZONE A LINE IF PRESENT
---	DRAIN LINE
---	SEWER LINE
---	SEWER MANHOLE
---	DRAIN MANHOLE
---	CATCHBASIN WITH HEADER
---	CATCHBASIN
---	FLARED END SECTION
---	WATER LINE
---	WATER GATE
---	WATER SHUT OFF
---	HYDRANT
---	GAS LINE
---	EDGE OF PAVEMENT
---	BITUMINOUS BERM
---	GRANITE CURB
---	GRANITE MONUMENT
---	CONCRETE MONUMENT
---	OVERHEAD WIRES
---	UTILITY POLE
---	CHAIN LINK FENCE
---	2' CONTOUR
---	10' CONTOUR
---	STONE WALL
---	TP7 TEST HOLE LOCATIONS

<b>TOTAL PARCEL AREA:</b> 638,506 SQ. FT. 14.6581 ACRES	<b>LOT 1 TOTAL AREA:</b> 247,635 SQ. FT. 5.6849 ACRES REG. FACTOR = 0.41	<b>LOT 2 TOTAL AREA:</b> 390,871 SQ. FT. 8.9732 ACRES REG. FACTOR = 0.84
<b>AREA IN SHREWSBURY:</b> 590,902 SQ. FT. 13.5652 ACRES	<b>AREA IN SHREWSBURY:</b> 204,131 SQ. FT. 4.6862 ACRES	<b>AREA IN SHREWSBURY:</b> 386,770 SQ. FT. 8.8790 ACRES
<b>AREA IN WORCESTER:</b> 11,016 SQ. FT. 0.2529 ACRES	<b>AREA IN WORCESTER:</b> 6,915 SQ. FT. 0.1588 ACRES	<b>AREA IN WORCESTER:</b> 4,101 SQ. FT. 0.0941 ACRES
<b>AREA IN WEST BOYLSTON:</b> 36,588 SQ. FT. 0.8399 ACRES	<b>AREA IN WEST BOYLSTON:</b> 36,588 SQ. FT. 0.8399 ACRES	

- NOTES:
- SUBJECT PROPERTY IS LOCATED PARTIALLY IN THREE COMMUNITIES. IT IS IDENTIFIED AS WORCESTER ASSESSORS MAP 52, BLOCK 6, PARCEL 8, SHREWSBURY ASSESSORS MAP 07, PARCEL 001000, AND WEST BOYLSTON ASSESSORS MAP 182, PARCEL 001-000.
  - IT IS OWNED BY 115 NORTHEAST CUTOFF REALTY TRUST.
  - SEE DEED RECORDED AT THE WRD REGISTERED LAND SECTION CERTIFICATE 18181, BOOK 91, PAGE 181.
  - SEE PLANS RECORDED AT THE WRD REGISTERED PLAN SECTION: 15625-E, 34145-A, AND 34201-A. AREA 14± ACRES.
  - ELEVATIONS REFER TO NAVD1988 DATUM AND THE TOPOGRAPHY SHOWN HEREON IS THE PRODUCT OF AN AERIAL TOPOGRAPHIC MAP PREPARED BY BLUESKY.
  - WETLAND RESOURCE AREAS WERE DELINEATED BY GLENN KREVOSKY OF EBT ENVIRONMENTAL CONSULTANTS, INC. AND THE BOUNDARIES WERE LOCATED BY INSTRUMENT SURVEY BY THIS FIRM.
  - THE WORCESTER PORTION OF THE PROPERTY IS LOCATED IN THE BG-2.0 ZONING DISTRICT AND LIES WITHIN THE WATER RESOURCES PROTECTION OVERLAY DISTRICT (GP-2).
  - THE WEST BOYLSTON PORTION OF THE PROPERTY IS LOCATED IN THE INDUSTRIAL ZONING DISTRICT.
  - THE SHREWSBURY PORTION OF THE PROPERTY IS LOCATED IN THE LIGHT INDUSTRIAL (LI) DISTRICT, AND LIES WITHIN THE GROUNDWATER PROTECTION OVERLAY DISTRICT 2.



N/F 160 HOLDEN STREET, LLC  
274-378 HOLDEN ST  
SHREWS ASSRS: 07/002000  
(UNDEVELOPED)

N/F ST. PIERRE MANUFACTURING CORP.  
317 EAST MOUNTAIN ST  
WB ASSRS: 182/003 AND 182/004  
(MANUFACTURING)

N/F CITY OF WORCESTER  
215&359 HOLDEN ST  
SHREWS ASSRS:  
13/007000  
(OPEN SPACE)

N/F CITY OF WORCESTER  
0 NORTHEAST CUTOFF  
ASSRS: 52-007-02+2C  
(RECREATION)

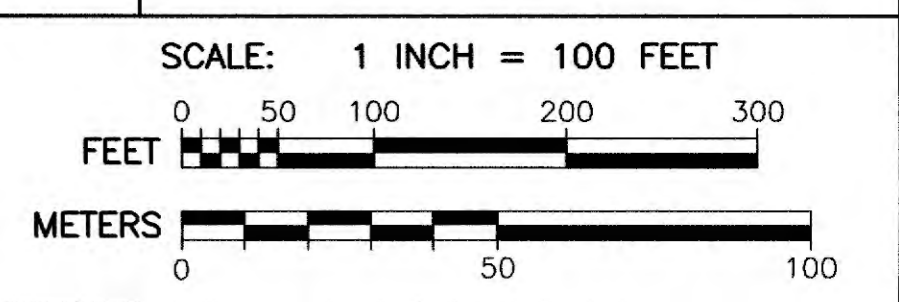
115 NORTHEAST CUTOFF REALTY TRUST  
115 NORTHEAST CUTOFF  
WORCESTER ASSRS: 52-6-1 & 2  
(BUSINESS AND EDUCATIONAL)

N/F CITY OF WORCESTER  
PARKS DEPARTMENT  
0 NORTHEAST CUTOFF  
ASSRS: 52-INX-0001D  
(RECREATION)



**THOMPSON-LISTON ASSOCIATES, INC.**  
Professional Engineers Professional Land Surveyors  
Erosion Control Specialists  
51 Main St. Boylston, MA, 01505  
info@tlainc.net (508) 869-6151

CLIENT:	JOB NO.
115NORTHEAST	-
DATE:	DWG NO.
06/30/2023	HOLDENSCURRENT
REVISIONS	
DATE:	DESCRIPTION



EXISTING CONDITIONS PLAN OF LAND IN  
SHREWSBURY AND  
WORCESTER MASSACHUSETTS  
PREPARED FOR OWNER:  
115 NORTHEAST CUTOFF REALTY TRUST



TOTAL PARCEL AREA  
638,506 SQ. FT.  
14.6581 ACRES

LOT 1 TOTAL AREA  
247,635 SQ. FT.  
5.6849 ACRES  
REG. FACTOR = 0.41

LOT 2 TOTAL AREA:  
390,871 SQ. FT.  
8.9732 ACRES  
REG. FACTOR = 0.84

AREA IN SHREWSBURY  
590,902 SQ. FT.  
13.5652 ACRES

AREA IN WORCESTER  
11,016 SQ. FT.  
0.2529 ACRES

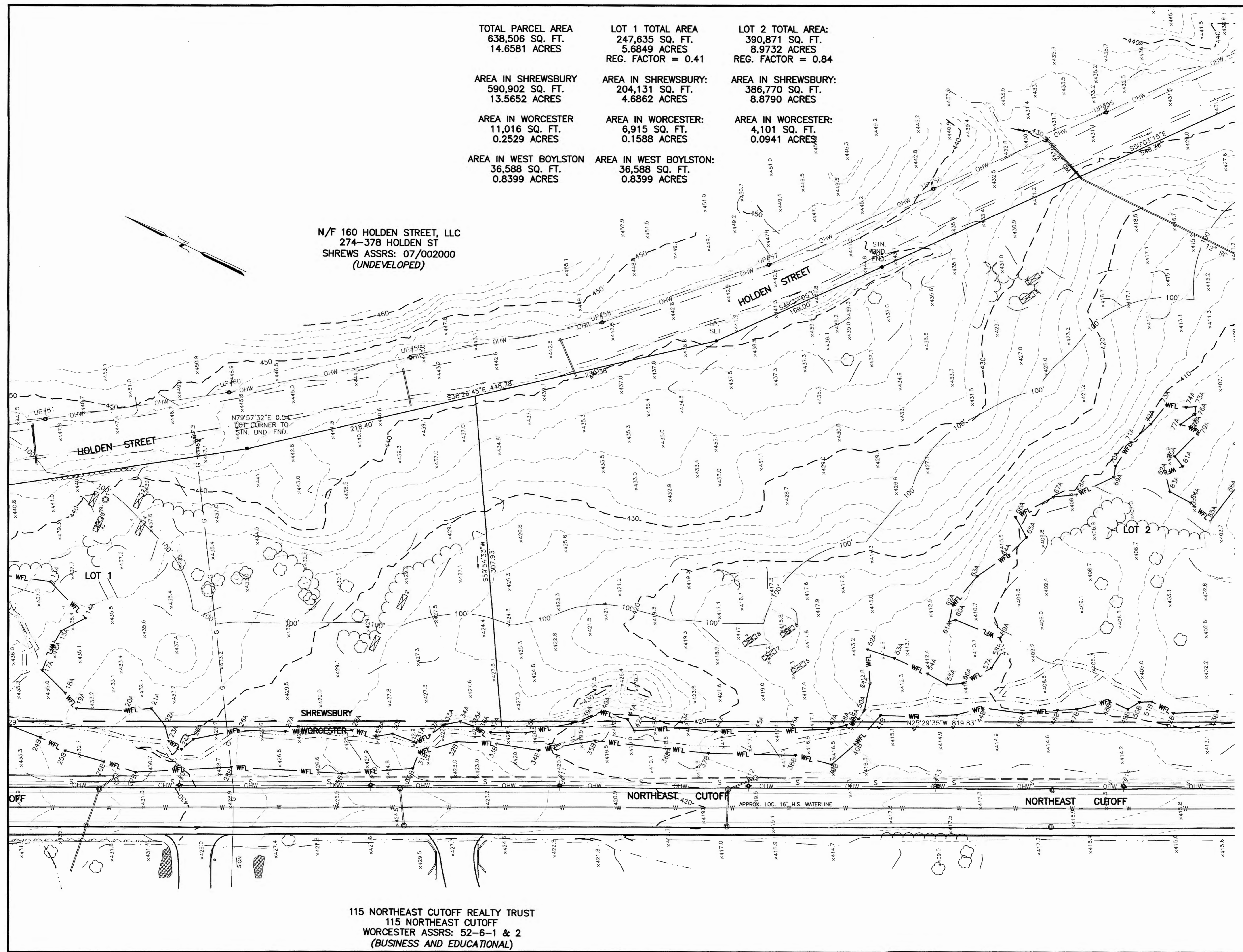
AREA IN WEST BOYLSTON  
36,588 SQ. FT.  
0.8399 ACRES

AREA IN SHREWSBURY:  
204,131 SQ. FT.  
4.6862 ACRES

AREA IN WORCESTER:  
6,915 SQ. FT.  
0.1588 ACRES

AREA IN WEST BOYLSTON:  
36,588 SQ. FT.  
0.8399 ACRES

N/F 160 HOLDEN STREET, LLC  
274-378 HOLDEN ST  
SHREWS ASSRS: 07/002000  
(UNDEVELOPED)



KEY

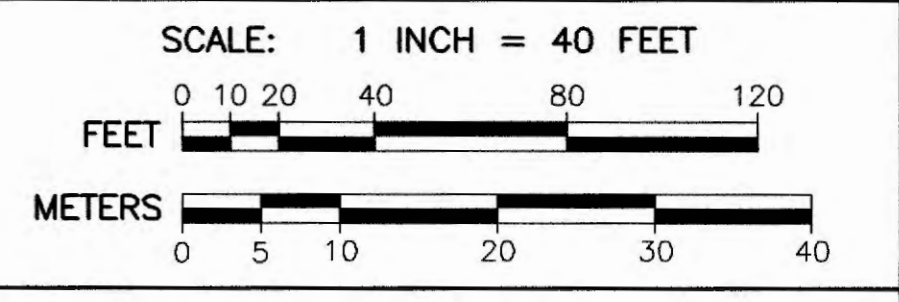
[Symbol]	BROOK OR POND HIGH WATER LINE
[Symbol]	RIVERFRONT AREA IF PRESENT
[Symbol]	MEAN ANNUAL HIGH WATER LINE
[Symbol]	BORDERING VEGETATED WETLAND
[Symbol]	15' WORK WETLAND BUFFER
[Symbol]	30' WORK WETLAND BUFFER
[Symbol]	100' BUFFER ZONE
[Symbol]	FEMA ZONE A LINE IF PRESENT
[Symbol]	DRAIN LINE
[Symbol]	SEWER LINE
[Symbol]	SEWER MANHOLE
[Symbol]	DRAIN MANHOLE
[Symbol]	CATCHBASIN WITH HEADER
[Symbol]	CATCHBASIN
[Symbol]	FLARED END SECTION
[Symbol]	WATER LINE
[Symbol]	WATER GATE
[Symbol]	WATER SHUT OFF
[Symbol]	HYDRANT
[Symbol]	GAS LINE
[Symbol]	EDGE OF PAVEMENT
[Symbol]	BITUMINOUS BERM
[Symbol]	GRANITE CURB
[Symbol]	GRANITE MONUMENT
[Symbol]	CONCRETE MONUMENT
[Symbol]	OVERHEAD WIRES
[Symbol]	UTILITY POLE
[Symbol]	CHAIN LINK FENCE
[Symbol]	2' CONTOUR
[Symbol]	10' CONTOUR
[Symbol]	STONE WALL
[Symbol]	TEST HOLE LOCATIONS

- NOTES:
- SUBJECT PROPERTY IS LOCATED PARTIALLY IN THREE COMMUNITIES. IT IS IDENTIFIED AS WORCESTER ASSESSORS MAP 52, BLOCK 6, PARCEL 8, SHREWSBURY ASSESSORS MAP 07, PARCEL 001000, AND WEST BOYLSTON ASSESSORS MAP 182, PARCEL 001-000.
  - IT IS OWNED BY 115 NORTHEAST CUTOFF REALTY TRUST.
  - SEE DEED RECORDED AT THE WRD REGISTERED LAND SECTION CERTIFICATE 18181, BOOK 91, PAGE 181.
  - SEE PLANS RECORDED AT THE WRD REGISTERED PLAN SECTION: 15625-E, 34145-A, AND 34201-A. AREA 14± ACRES.
  - ELEVATIONS REFER TO NAVD1988 DATUM AND THE TOPOGRAPHY SHOWN HEREON IS THE PRODUCT OF AN AERIAL TOPOGRAPHIC MAP PREPARED BY BLUESKY.
  - WETLAND RESOURCE AREAS WERE DELINEATED BY GLENN KREVOVSKY OF EBT ENVIRONMENTAL CONSULTANTS, INC. AND THE BOUNDARIES WERE LOCATED BY INSTRUMENT SURVEY BY THIS FIRM.
  - THE WORCESTER PORTION OF THE PROPERTY IS LOCATED IN THE BG-2.0 ZONING DISTRICT AND LIES WITHIN THE WATER RESOURCES PROTECTION OVERLAY DISTRICT (GP-2).
  - THE WEST BOYLSTON PORTION OF THE PROPERTY IS LOCATED IN THE INDUSTRIAL ZONING DISTRICT.
  - THE SHREWSBURY PORTION OF THE PROPERTY IS LOCATED IN THE LIGHT INDUSTRIAL (LI) DISTRICT, AND LIES WITHIN THE GROUNDWATER PROTECTION OVERLAY DISTRICT 2.



**THOMPSON-LISTON ASSOCIATES, INC.**  
Professional Engineers - Professional Land Surveyors  
Erosion Control Specialists  
51 Main St. Boylston, MA, 01505  
info@tlainc.net (508) 869-6151

CLIENT:	115NORTHEAST	JOB NO.:	-
DATE:	06/30/2023	DWG NO.:	HOLDENSTCURRENT
DATE:		REVISIONS DESCRIPTION	



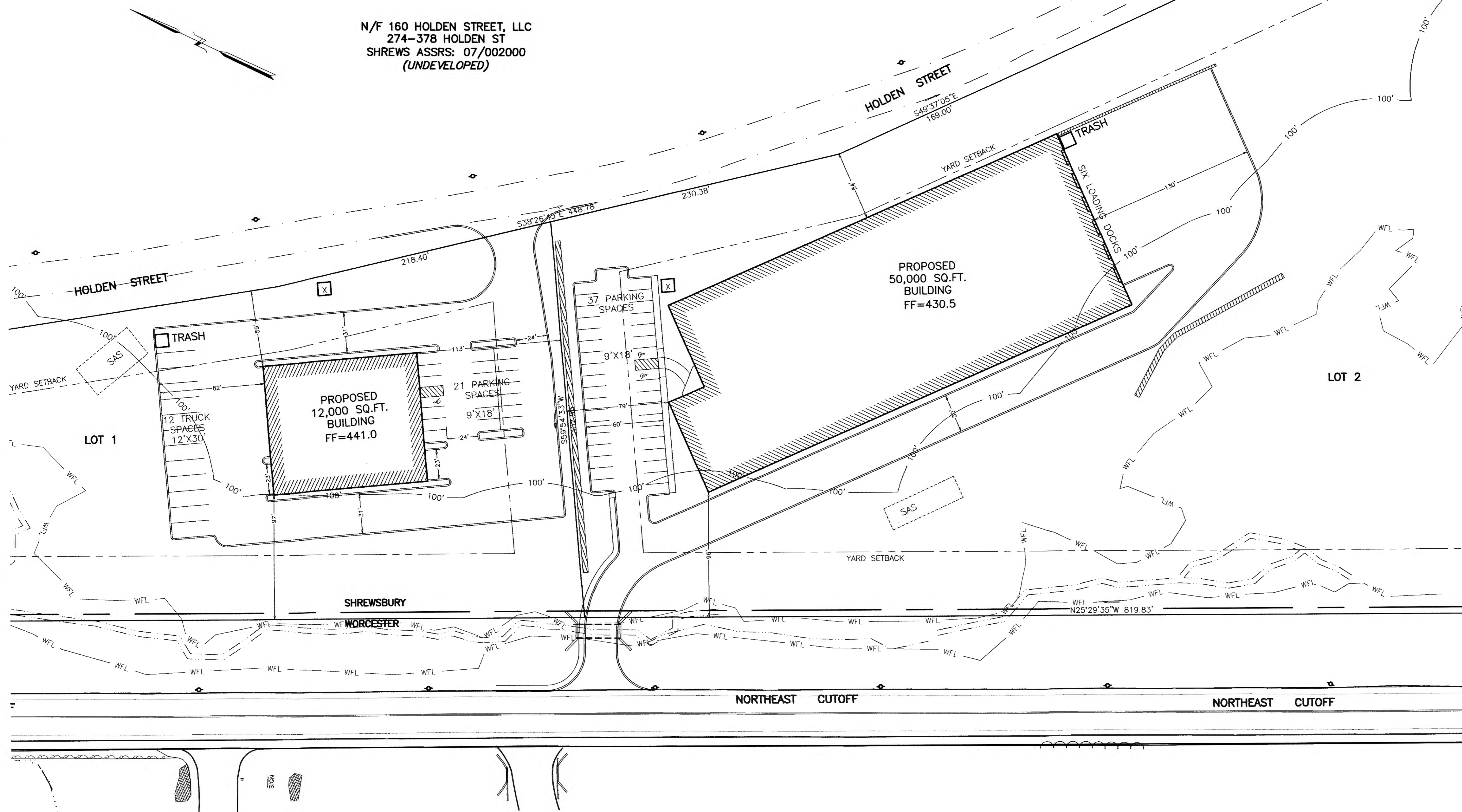
EXISTING CONDITIONS PLAN OF LAND IN SHREWSBURY AND WORCESTER MASSACHUSETTS PREPARED FOR OWNER: 115 NORTHEAST CUTOFF REALTY TRUST

115 NORTHEAST CUTOFF REALTY TRUST  
115 NORTHEAST CUTOFF  
WORCESTER ASSRS: 52-6-1 & 2  
(BUSINESS AND EDUCATIONAL)



TOTAL PARCEL AREA 638,506 SQ. FT. 14.6581 ACRES	LOT 1 TOTAL AREA 247,635 SQ. FT. 5.6849 ACRES REG. FACTOR = 0.41	LOT 2 TOTAL AREA: 390,871 SQ. FT. 8.9732 ACRES REG. FACTOR = 0.84
AREA IN SHREWSBURY 590,902 SQ. FT. 13.5652 ACRES	AREA IN SHREWSBURY: 204,131 SQ. FT. 4.6862 ACRES	AREA IN SHREWSBURY: 386,770 SQ. FT. 8.8790 ACRES
AREA IN WORCESTER 11,016 SQ. FT. 0.2529 ACRES	AREA IN WORCESTER: 6,915 SQ. FT. 0.1588 ACRES	AREA IN WORCESTER: 4,101 SQ. FT. 0.0941 ACRES
AREA IN WEST BOYLSTON 36,588 SQ. FT. 0.8399 ACRES	AREA IN WEST BOYLSTON: 36,588 SQ. FT. 0.8399 ACRES	

N/F 160 HOLDEN STREET, LLC  
274-378 HOLDEN ST  
SHREWS ASSRS: 07/002000  
(UNDEVELOPED)



--- KEY ---

---	BROOK OR POND HIGH WATER LINE
---	RIVERFRONT AREA IF PRESENT
---	MEAN ANNUAL HIGH WATER LINE
---	BORDERING VEGETATED WETLAND
---	15' WORC WETLAND BUFFER
---	30' WORC WETLAND BUFFER
---	100' BUFFER ZONE
---	FEMA ZONE A LINE IF PRESENT
---	DRAIN LINE
---	SEWER LINE
---	SEWER MANHOLE
---	DRAIN MANHOLE
---	CATCHBASIN WITH HEADER
---	CATCHBASIN
---	FLARED END SECTION
---	WATER LINE
---	WATER GATE
---	WATER SHUT OFF
---	HYDRANT
---	GAS LINE
---	EDGE OF PAVEMENT
---	BITUMINOUS BERM
---	GRANITE CURB
---	GRANITE MONUMENT
---	CONCRETE MONUMENT
---	OVERHEAD WIRES
---	UTILITY POLE
---	CHAIN LINK FENCE
---	2' CONTOUR
---	10' CONTOUR
---	STONE WALL
---	TEST HOLE LOCATIONS

- NOTES:
- SUBJECT PROPERTY IS LOCATED PARTIALLY IN THREE COMMUNITIES. IT IS IDENTIFIED AS WORCESTER ASSESSORS MAP 52, BLOCK 6, PARCEL 8, SHREWSBURY ASSESSORS MAP 07, PARCEL 001000, AND WEST BOYLSTON ASSESSORS MAP 182, PARCEL 001-000.
  - IT IS OWNED BY 115 NORTHEAST CUTOFF REALTY TRUST.
  - SEE DEED RECORDED AT THE WRD REGISTERED LAND SECTION CERTIFICATE 18181, BOOK 91, PAGE 181.
  - SEE PLANS RECORDED AT THE WRD REGISTERED PLAN SECTION: 15625-E, 34145-A, AND 34201-A. AREA 14+ ACRES.
  - ELEVATIONS REFER TO NAVD1988 DATUM AND THE TOPOGRAPHY SHOWN HEREON IS THE PRODUCT OF AN AERIAL TOPOGRAPHIC MAP PREPARED BY BLUESKY.
  - WETLAND RESOURCE AREAS WERE DELINEATED BY GLENN KREVOISKY OF EBT ENVIRONMENTAL CONSULTANTS, INC. AND THE BOUNDARIES WERE LOCATED BY INSTRUMENT SURVEY BY THIS FIRM.
  - THE WORCESTER PORTION OF THE PROPERTY IS LOCATED IN THE BG-2.0 ZONING DISTRICT AND LIES WITHIN THE WATER RESOURCES PROTECTION OVERLAY DISTRICT (GP-2).
  - THE WEST BOYLSTON PORTION OF THE PROPERTY IS LOCATED IN THE INDUSTRIAL ZONING DISTRICT.
  - THE SHREWSBURY PORTION OF THE PROPERTY IS LOCATED IN THE LIGHT INDUSTRIAL (LI) DISTRICT, AND LIES WITHIN THE GROUNDWATER PROTECTION OVERLAY DISTRICT 2.

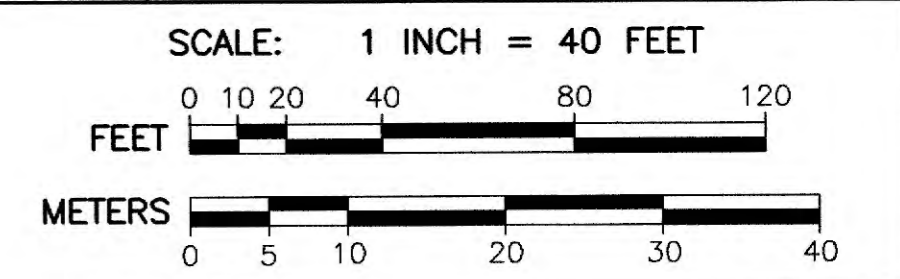


**THOMPSON-LISTON ASSOCIATES, INC.**  
Professional Engineers Professional Land Surveyors  
Erosion Control Specialists  
51 Main St. Boylston, MA, 01505  
info@tlainc.net (508) 869-6151

CLIENT: 115NORTHEAST JOB NO. -

DATE: 8/22/2023 DWG NO. HOLDENSCURRENT

DATE	REVISIONS DESCRIPTION



PLAN TO ACCOMPANY NOTICE OF INTENT FOR WORK PROPOSED IN SHREWSBURY AND WORCESTER MASSACHUSETTS PREPARED FOR OWNER: 115 NORTHEAST CUTOFF REALTY TRUST

115 NORTHEAST CUTOFF REALTY TRUST  
115 NORTHEAST CUTOFF  
WORCESTER ASSRS: 52-6-1 & 2  
(BUSINESS AND EDUCATIONAL)



**DIG SAFE:**  
EXCEPT FOR VISIBLE STRUCTURES (MANHOLES, GATES, POLES, ETC.) LOCATED BY THOMPSON-LISTON ASSOCIATES, INC., ALL UNDERGROUND UTILITIES SHOWN WERE COMPILED ACCORDING TO AVAILABLE RECORD PLANS FROM THE VARIOUS UTILITY COMPANIES AND PUBLIC AGENCIES AND THEIR LOCATIONS DEPICTED HERE ARE APPROXIMATE ONLY. THE ACTUAL UTILITY LOCATIONS MUST BE DETERMINED IN THE FIELD BEFORE DESIGNING, EXCAVATING, BLASTING, DRILLING, INSTALLING, BACKFILLING, GRADING, PAVEMENT RESTORATION OR REPAIRS ARE STARTED. ALL UTILITY COMPANIES, PUBLIC & PRIVATE, MUST BE CONTACTED, INCLUDING THOSE IN CONTROL OF UTILITIES NOT SHOWN ON THIS PLAN. THOMPSON-LISTON ASSOCIATES, INC. ASSUMES NO RESPONSIBILITY FOR DAMAGES INCURRED AS A RESULT OF UTILITIES OMITTED OR INACCURATELY SHOWN. CALL "DIG SAFE" AT 1-888-344-7233.

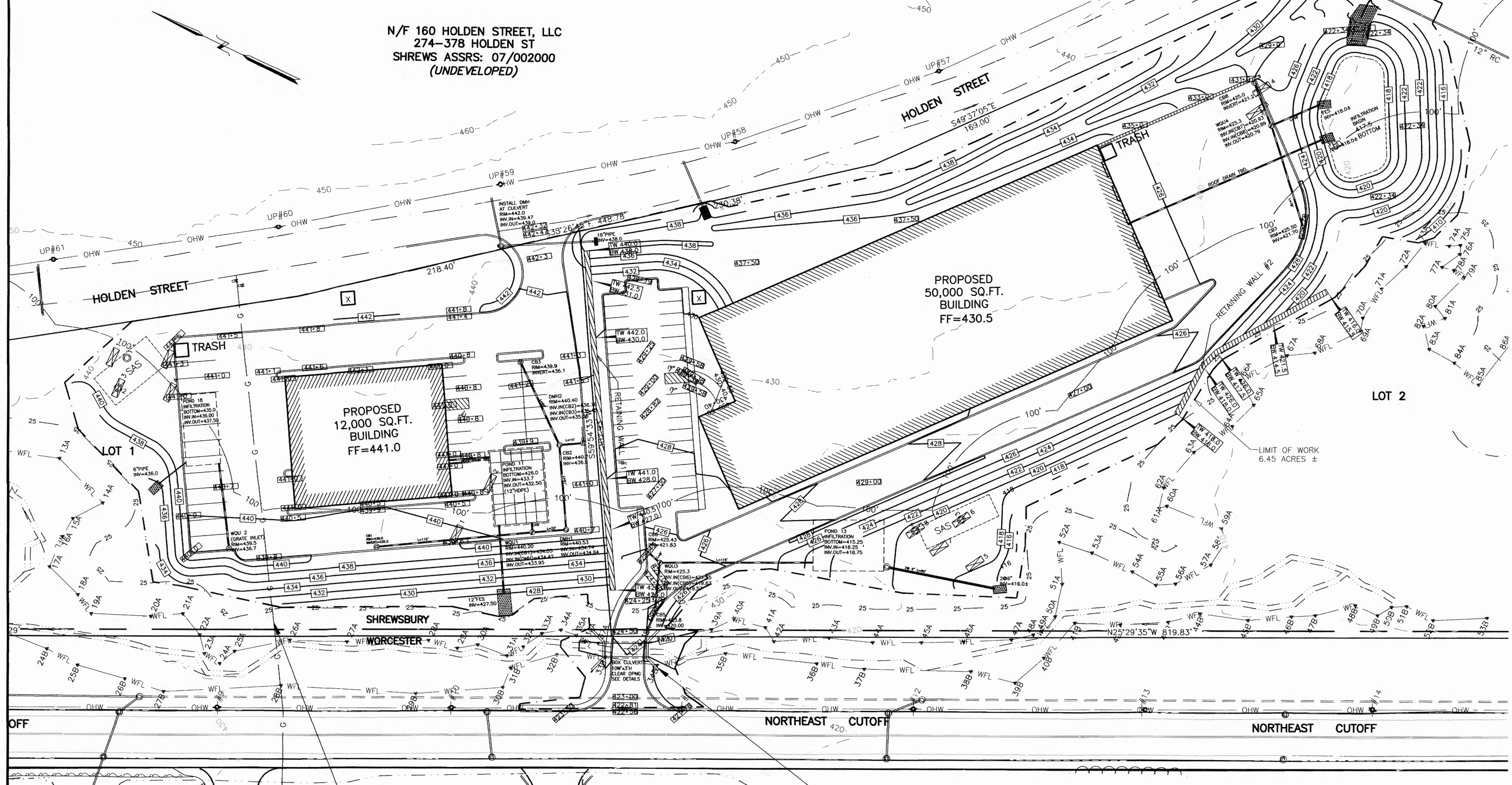
<b>TOTAL PARCEL AREA</b> 638,506 SQ. FT. 14.6581 ACRES	<b>LOT 1 TOTAL AREA</b> 247,635 SQ. FT. 5.6849 ACRES REG. FACTOR = 0.41	<b>LOT 2 TOTAL AREA:</b> 390,871 SQ. FT. 8.9732 ACRES REG. FACTOR = 0.84
<b>AREA IN SHREWSBURY</b> 590,902 SQ. FT. 13.5652 ACRES	<b>AREA IN SHREWSBURY:</b> 204,131 SQ. FT. 4.6862 ACRES	<b>AREA IN SHREWSBURY:</b> 386,770 SQ. FT. 8.8790 ACRES
<b>AREA IN WORCESTER</b> 11,016 SQ. FT. 0.2529 ACRES	<b>AREA IN WORCESTER:</b> 6,915 SQ. FT. 0.1588 ACRES	<b>AREA IN WORCESTER:</b> 4,101 SQ. FT. 0.0941 ACRES
<b>AREA IN WEST BOYLSTON</b> 36,588 SQ. FT. 0.8399 ACRES	<b>AREA IN WEST BOYLSTON:</b> 36,588 SQ. FT. 0.8399 ACRES	

N/F 160 HOLDEN STREET, LLC  
274-378 HOLDEN ST  
SHREWS ASSRS: 07/002000  
(UNDEVELOPED)

--- KEY ---

---	BROOK OR POND HIGH WATER LINE
---	RIVERFRONT AREA IF PRESENT
---	MEAN ANNUAL HIGH WATER LINE
---	BORDERING VEGETATED WETLAND
---	15' WORK WETLAND BUFFER
---	30' WORK WETLAND BUFFER
---	100' BUFFER ZONE
---	FEMA ZONE A LINE IF PRESENT
---	DRAIN LINE
---	SEWER LINE
---	SEWER MANHOLE
---	DRAIN MANHOLE
---	CATCHBASIN WITH HEADER
---	CATCHBASIN
---	FLARED END SECTION
---	WATER LINE
---	WATER GATE
---	WATER SHUT OFF
---	HYDRANT
---	GAS LINE
---	EDGE OF PAVEMENT
---	BITUMINOUS BERM
---	GRANITE CURB
---	GRANITE MONUMENT
---	CONCRETE MONUMENT
---	OVERHEAD WIRES
---	UTILITY POLE
---	CHAIN LINK FENCE
---	2' CONTOUR
---	10' CONTOUR
---	STONE WALL
---	TEST HOLE LOCATIONS

- NOTES:
- SUBJECT PROPERTY IS LOCATED PARTIALLY IN THREE COMMUNITIES. IT IS IDENTIFIED AS WORCESTER ASSESSORS MAP 52, BLOCK 6, PARCEL 8, SHREWSBURY ASSESSORS MAP 07, PARCEL 001000, AND WEST BOYLSTON ASSESSORS MAP 182, PARCEL 001-000.
  - IT IS OWNED BY 115 NORTHEAST CUTOFF REALTY TRUST.
  - SEE DEED RECORDED AT THE WRD REGISTERED LAND SECTION CERTIFICATE 18181, BOOK 91, PAGE 181.
  - SEE PLANS RECORDED AT THE WRD REGISTERED PLAN SECTION: 15625-E, 34145-A, AND 34201-A. AREA 14± ACRES.
  - ELEVATIONS REFER TO NAVD1988 DATUM AND THE TOPOGRAPHY SHOWN HEREON IS THE PRODUCT OF AN AERIAL TOPOGRAPHIC MAP PREPARED BY BLUESKY.
  - WETLAND RESOURCE AREAS WERE DELINEATED BY GLENN KREVOVSKY OF EBT ENVIRONMENTAL CONSULTANTS, INC. AND THE BOUNDARIES WERE LOCATED BY INSTRUMENT SURVEY BY THIS FIRM.
  - THE WORCESTER PORTION OF THE PROPERTY IS LOCATED IN THE BG-2.0 ZONING DISTRICT AND LIES WITHIN THE WATER RESOURCES PROTECTION OVERLAY DISTRICT (GP-2).
  - THE WEST BOYLSTON PORTION OF THE PROPERTY IS LOCATED IN THE INDUSTRIAL ZONING DISTRICT.
  - THE SHREWSBURY PORTION OF THE PROPERTY IS LOCATED IN THE LIGHT INDUSTRIAL (LI) DISTRICT, AND LIES WITHIN THE GROUNDWATER PROTECTION OVERLAY DISTRICT 2.



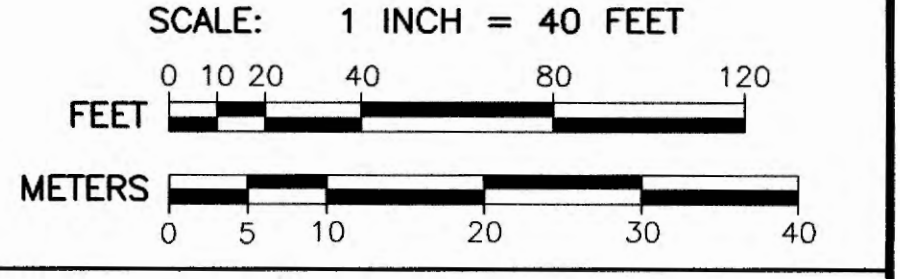
IDENTIFY, MAINTAIN, AND PROTECT THE EXISTING HIGH PRESSURE GAS PIPE THAT RUNS THROUGH THE LOT. DO NOT EXCAVATE. DO NOT CROSS THE GAS PIPE WITH ANY SERVICES OTHER THAN THE FORCE SEWER.

THE CURB CUT, WETLAND RESOURCE AREA CROSSING WITH PRECAST CONCRETE HEADWALLS AND OPEN BOTTOM BOX CULVERT ARE PROPOSED IN WORCESTER (SEE DETAILS)

115 NORTHEAST CUTOFF REALTY TRUST  
115 NORTHEAST CUTOFF  
WORCESTER ASSRS: 52-6-1 & 2  
(BUSINESS AND EDUCATIONAL)

**THOMPSON-LISTON ASSOCIATES, INC.**  
Professional Engineers Professional Land Surveyors  
Erosion Control Specialists  
51 Main St. Boylston, MA, 01505  
info@tlainc.net (508) 869-6151

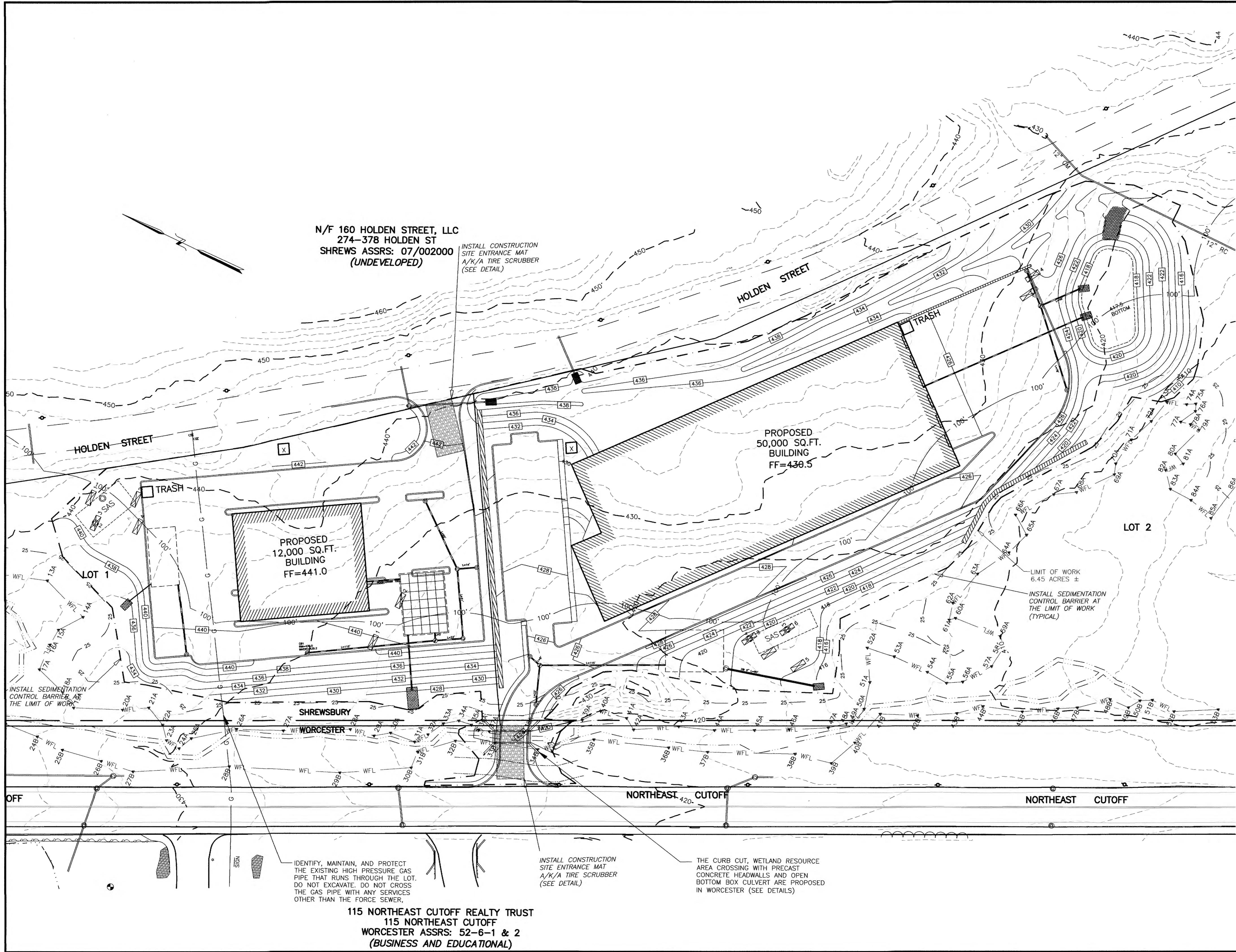
CLIENT:	115NORTHEAST	JOB NO.	
DATE:	8/22/2023	DWG NO.	HOLDENSTCURRENT
DATE:		REVISIONS	
		DESCRIPTION	



PLAN TO ACCOMPANY NOTICE OF INTENT FOR WORK PROPOSED IN SHREWSBURY AND WORCESTER MASSACHUSETTS PREPARED FOR OWNER: 115 NORTHEAST CUTOFF REALTY TRUST

SHEET C3 GRADING AND DRAINAGE





- KEY ---
- BROOK OR POND HIGH WATER LINE
  - RIVERFRONT AREA IF PRESENT
  - MEAN ANNUAL HIGH WATER LINE
  - BORDERING VEGETATED WETLAND
  - 15' WORC WETLAND BUFFER
  - 30' WORK WETLAND BUFFER
  - 100' BUFFER ZONE
  - FEMA ZONE A LINE IF PRESENT
  - DRAIN LINE
  - SEWER LINE
  - SEWER MANHOLE
  - DRAIN MANHOLE
  - CATCHBASIN WITH HEADER
  - CATCHBASIN
  - FLARED END SECTION
  - WATER LINE
  - WATER GATE
  - WATER SHUT OFF
  - HYDRANT
  - GAS LINE
  - EDGE OF PAVEMENT
  - BITUMINOUS BERM
  - GRANITE CURB
  - GRANITE MONUMENT
  - CONCRETE MONUMENT
  - OVERHEAD WIRES
  - UTILITY POLE
  - CHAIN LINK FENCE
  - 2' CONTOUR
  - 10' CONTOUR
  - STONE WALL
  - TP7 TEST HOLE LOCATIONS

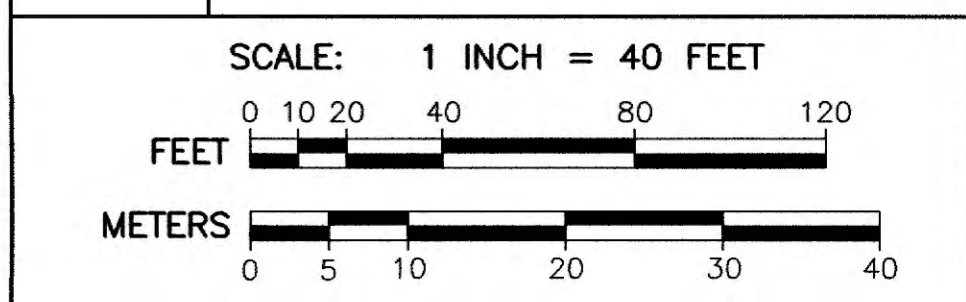
**DIG SAFE:**  
EXCEPT FOR VISIBLE STRUCTURES (MANHOLES, GATES, POLES, ETC.) LOCATED BY THOMPSON-LISTON ASSOCIATES, INC., ALL UNDERGROUND UTILITIES SHOWN WERE COMPILED ACCORDING TO AVAILABLE RECORD PLANS FROM THE VARIOUS UTILITY COMPANIES AND PUBLIC AGENCIES AND THEIR LOCATIONS DEPICTED HERE ARE APPROXIMATE ONLY. THE ACTUAL UTILITY LOCATIONS MUST BE DETERMINED IN THE FIELD BEFORE DESIGNING, EXCAVATING, BLASTING, DRILLING, INSTALLING, BACKFILLING, GRADING, PAVEMENT RESTORATION OR REPAIRS ARE STARTED. ALL UTILITY COMPANIES, PUBLIC & PRIVATE, MUST BE CONTACTED, INCLUDING THOSE IN CONTROL OF UTILITIES NOT SHOWN ON THIS PLAN. THOMPSON-LISTON ASSOCIATES, INC. ASSUMES NO RESPONSIBILITY FOR DAMAGES INCURRED AS A RESULT OF UTILITIES OMITTED OR INACCURATELY SHOWN. CALL "DIG SAFE" AT 1-888-344-7233.

  
*Signature*

**THOMPSON-LISTON ASSOCIATES, INC.**  
Professional Engineers Professional Land Surveyors  
Erosion Control Specialists  
51 Main St. Boylston, MA, 01505  
info@tlainc.net (508) 869-6151

CLIENT:	115NORTHEAST	JOB NO.:	-
DATE:	8/22/2023	DWG NO.:	HOLDENSCURRENT

REVISIONS	
DATE:	DESCRIPTION

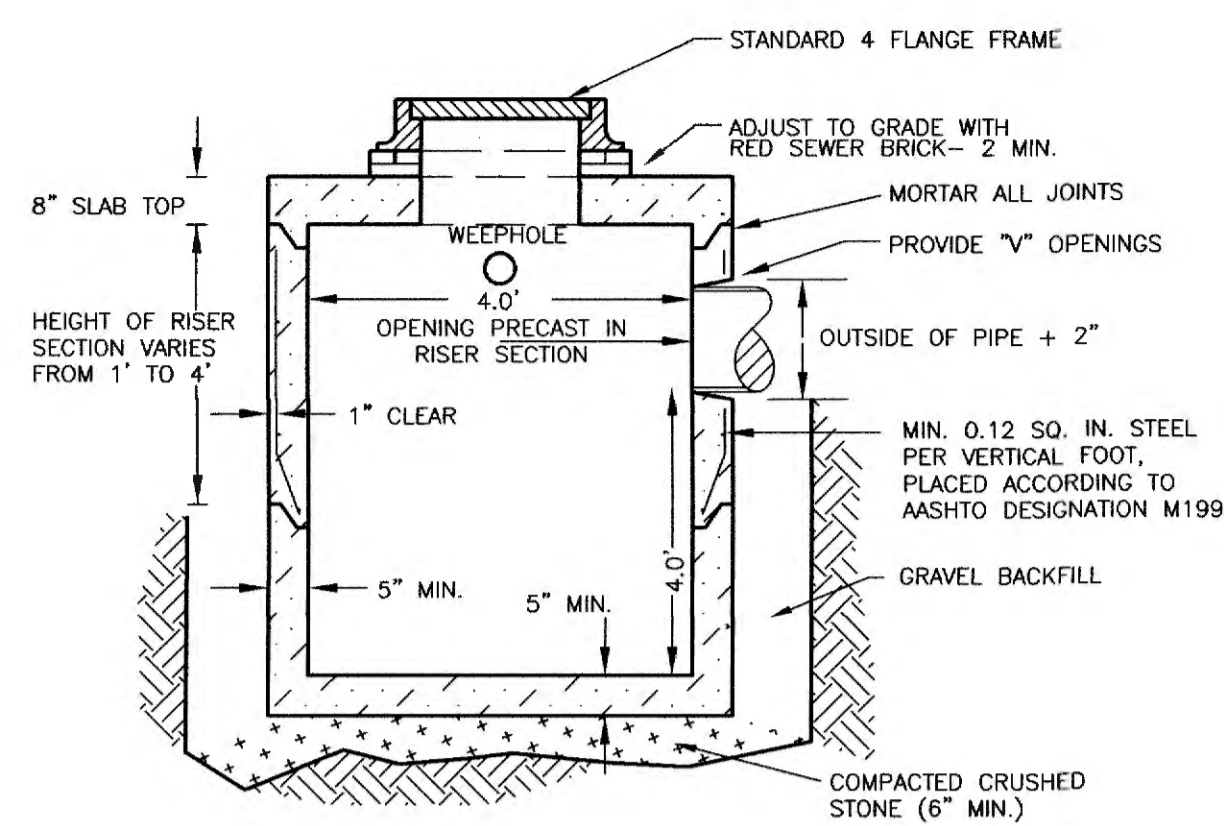


PLAN TO COMPANY NOTICE OF INTENT FOR WORK PROPOSED IN SHREWSBURY AND WORCESTER MASSACHUSETTS PREPARED FOR OWNER: 115 NORTHEAST CUTOFF REALTY TRUST

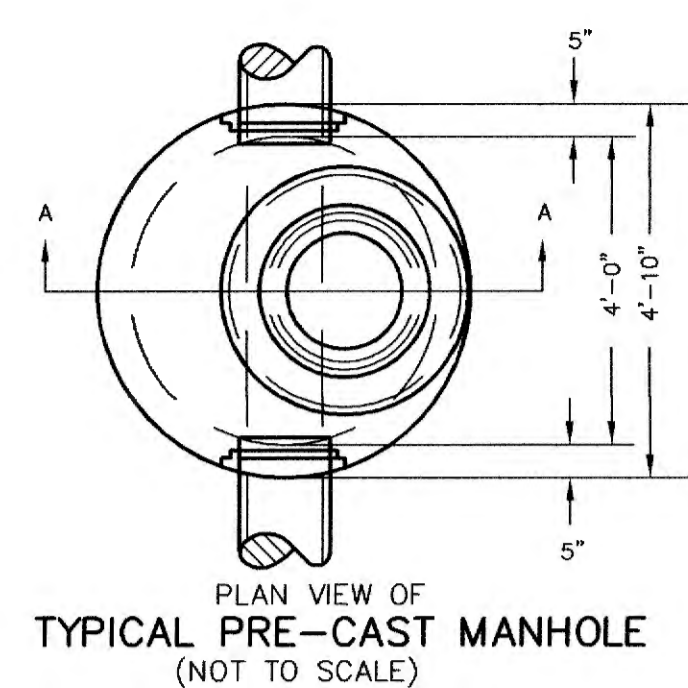




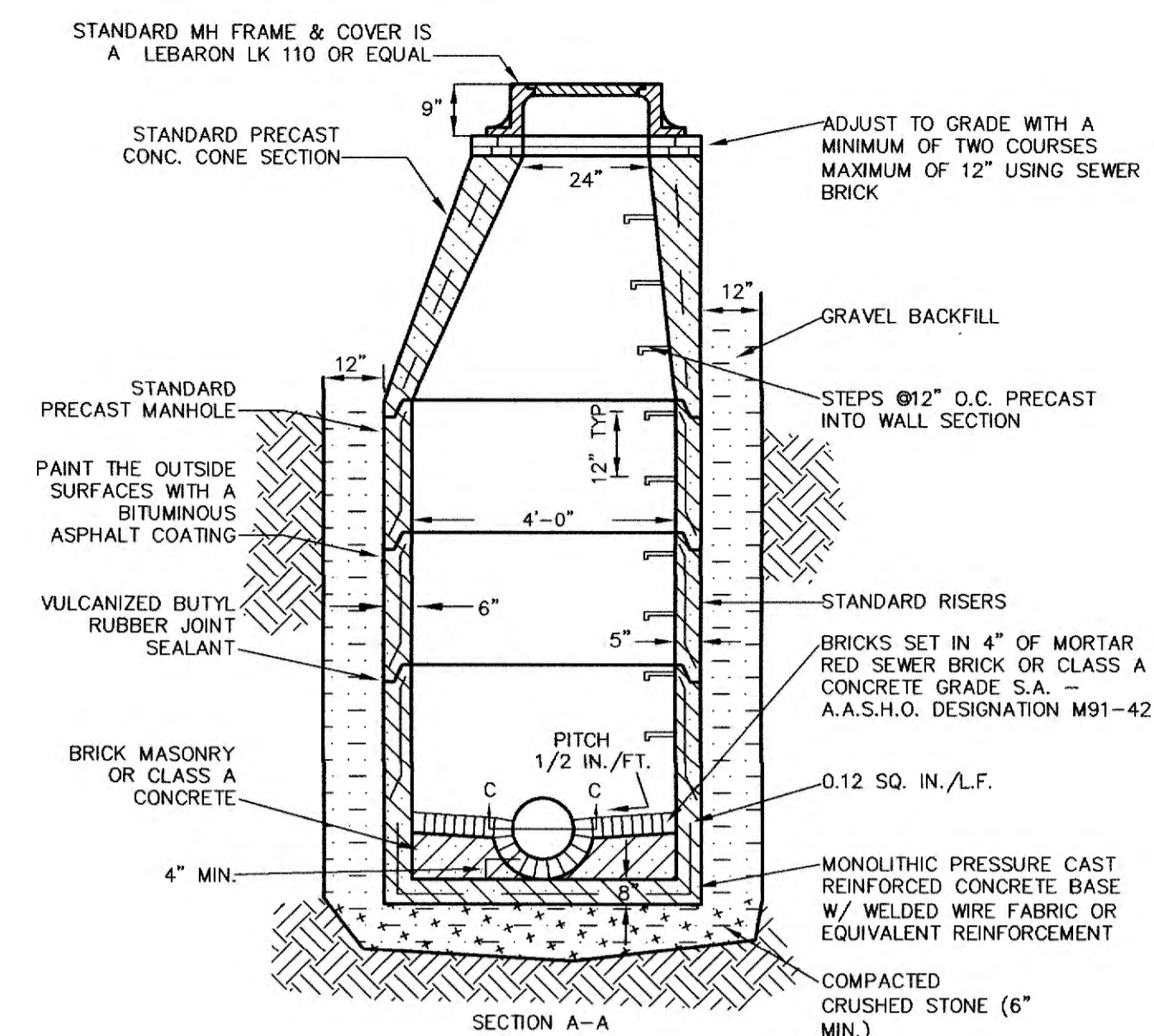




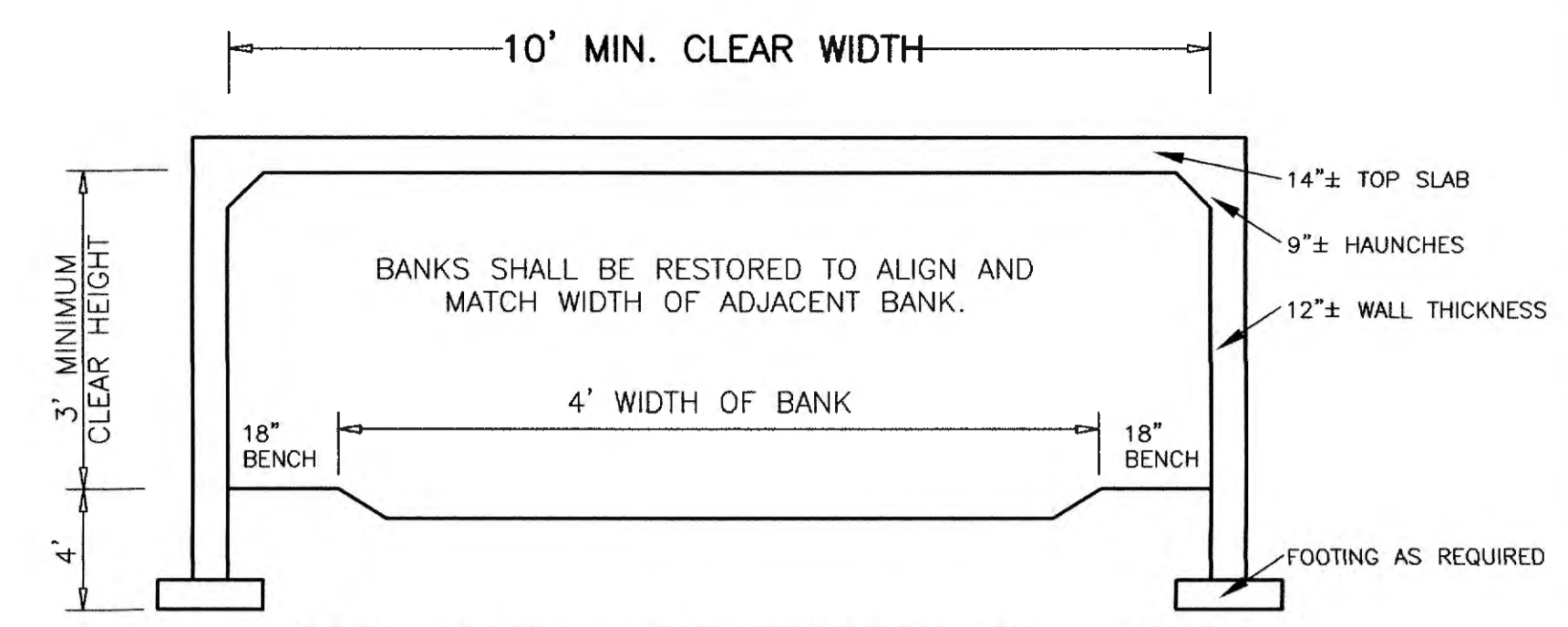
**PRECAST CATCHBASIN**  
(NOT TO SCALE)



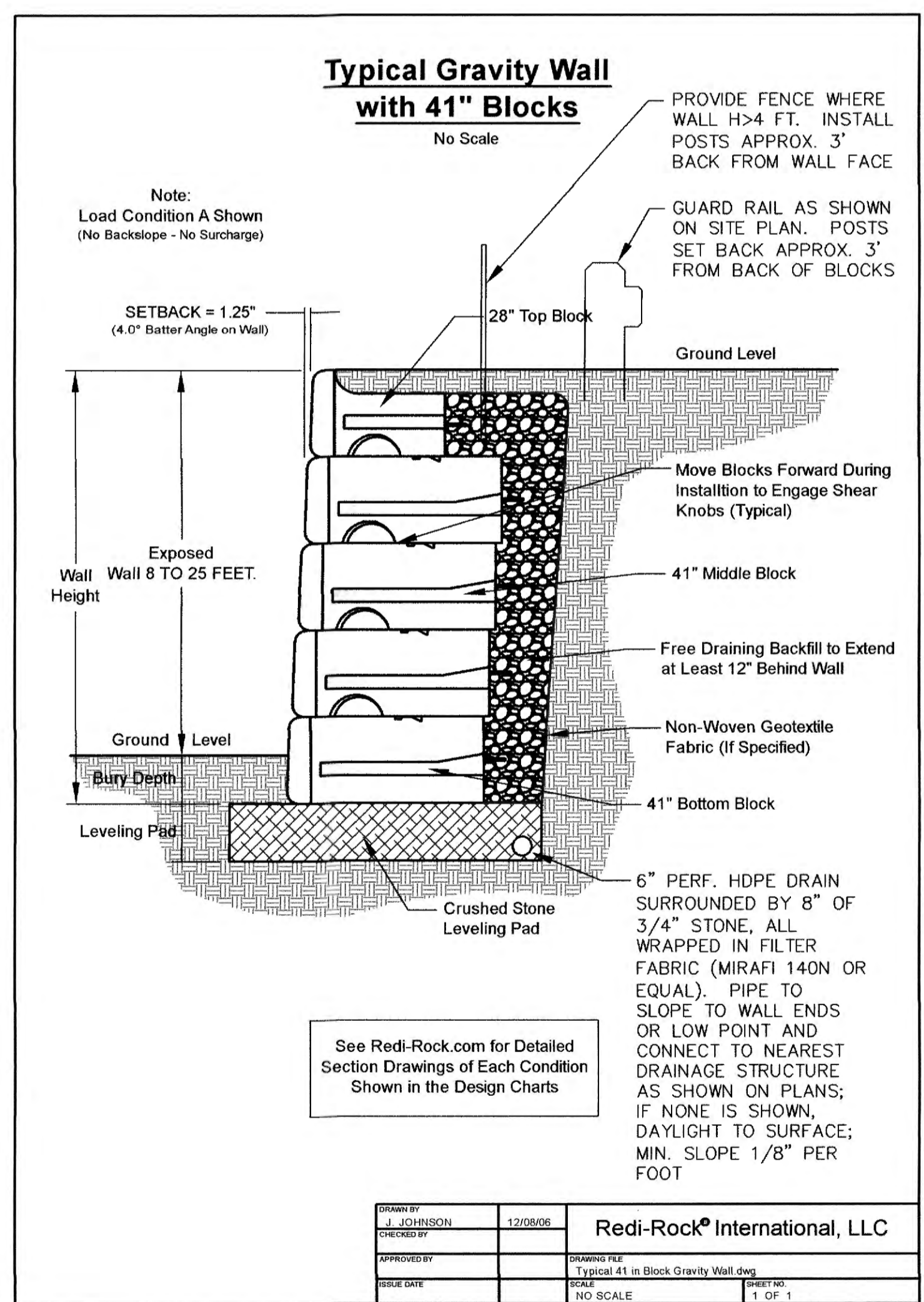
**TYPICAL PRE-CAST MANHOLE**  
(NOT TO SCALE)



**TYPICAL PRECAST MANHOLE**  
(NOT TO SCALE)



**DETAIL OF PRE-CAST CONCRETE BOX CULVERT**  
**AS MANUFACTURED BY ARROW CONCRETE OR EQUAL**  
MINIMUM DIMENSIONS AND OPENNESS RATIO ARE SHOWN. LARGER BOX CULVERTS OR PRECAST CONCRETE ARCHES MAY BE SUBSTITUTED WITH LARGER AREAS.  
(NOT TO SCALE)



**Typical Gravity Wall with 41" Blocks**  
No Scale

Note:  
Load Condition A Shown  
(No Backslope - No Surcharge)

SETBACK = 1.25"  
(4.0° Batter Angle on Wall)

Exposed Wall Height 8 TO 25 FEET.

Ground Level

Bury Depth

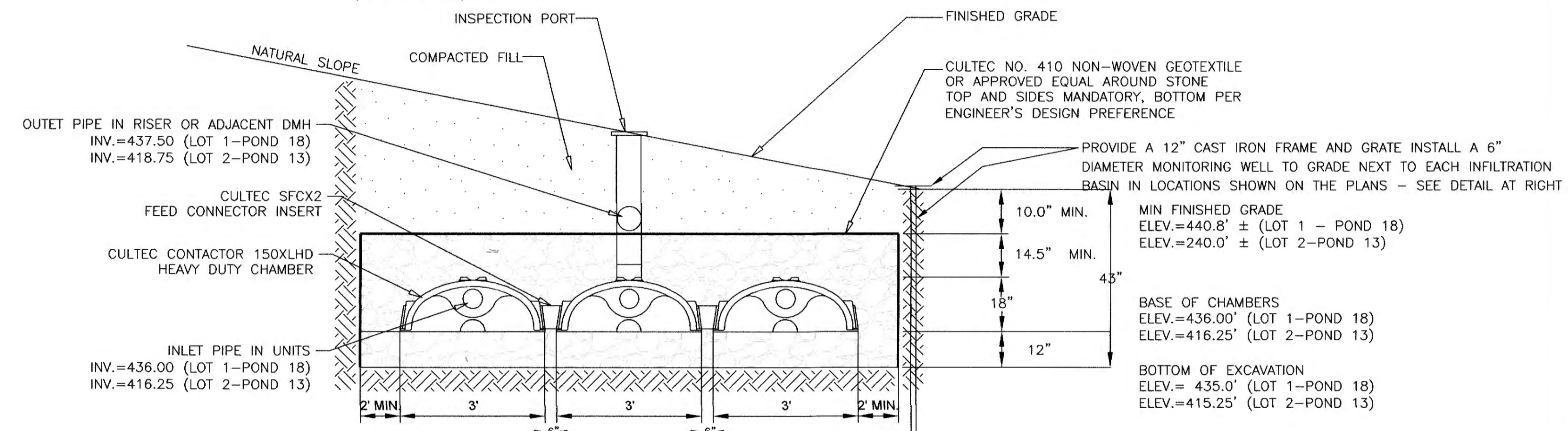
Leveling Pad

See Redi-Rock.com for Detailed Section Drawings of Each Condition Shown in the Design Charts

DESIGNED BY	J. JOHNSON	12/20/08	<b>Redi-Rock® International, LLC</b>
CHECKED BY			
APPROVED BY			
SCALE	TYPICAL 41 in Block Gravity Wall (cont)		
NO. OF SHEETS	NO SCALE		1 OF 1

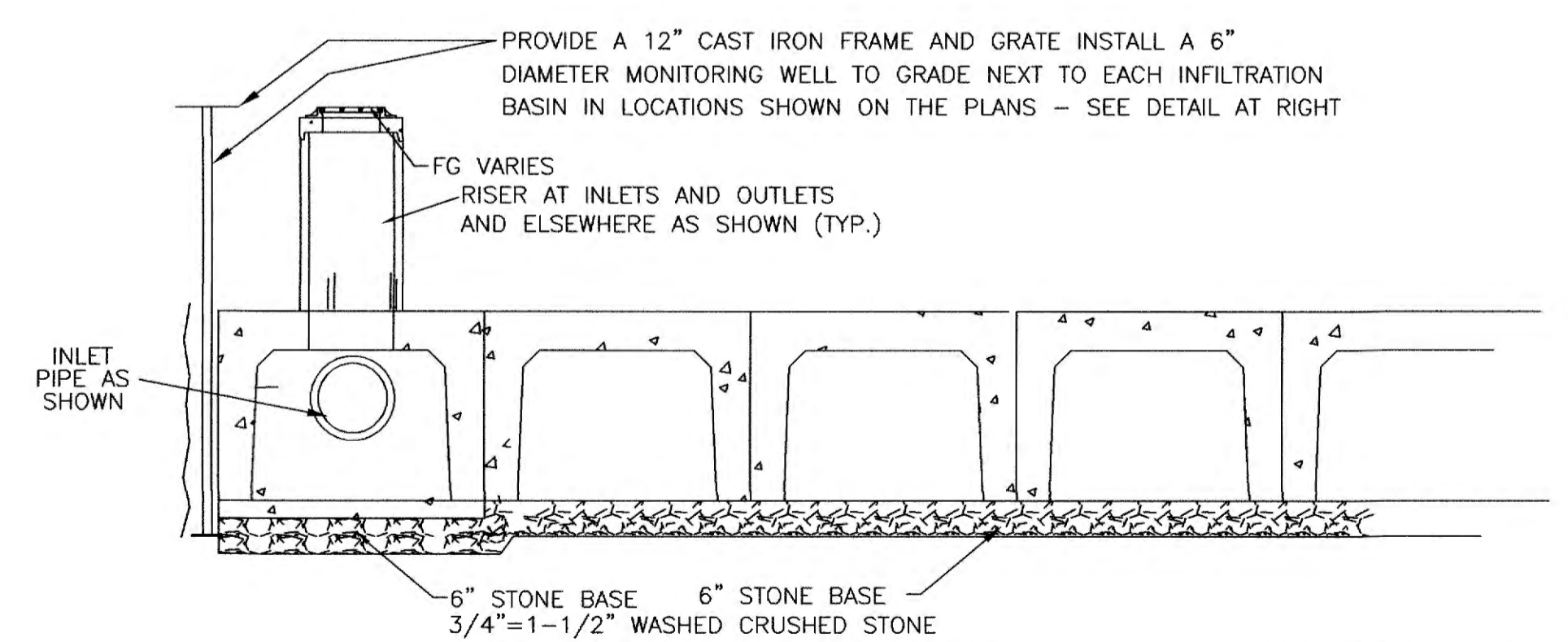
FOR LARGE WALL APPLICATION, USE TEXTURED BLOCKS AS MANUFACTURED BY REDI-ROCK INTERNATIONAL OR APPROVED EQUAL  
**RETAINING WALL 1 BETWEEN LOTS 1&2 PARKING LOTS**  
**RETAINING WALL 2 AT SOUTH END OF LOT 2 DRIVEWAY**  
(NOT TO SCALE)

RETAINING WALL DETAILS ARE REPRESENTATIVE OF THE TYPE OF WALLS THAT ARE PROPOSED. THE CONTRACTOR SHALL ENGAGE A PROFESSIONAL ENGINEER REGISTERED IN MASSACHUSETTS TO PREPARE RETAINING WALL DESIGN PLANS AND CALCULATIONS THAT ARE BASED UPON LOCAL SOIL AND LOADING CONDITIONS AS PART OF THE GENERAL CONTRACT.



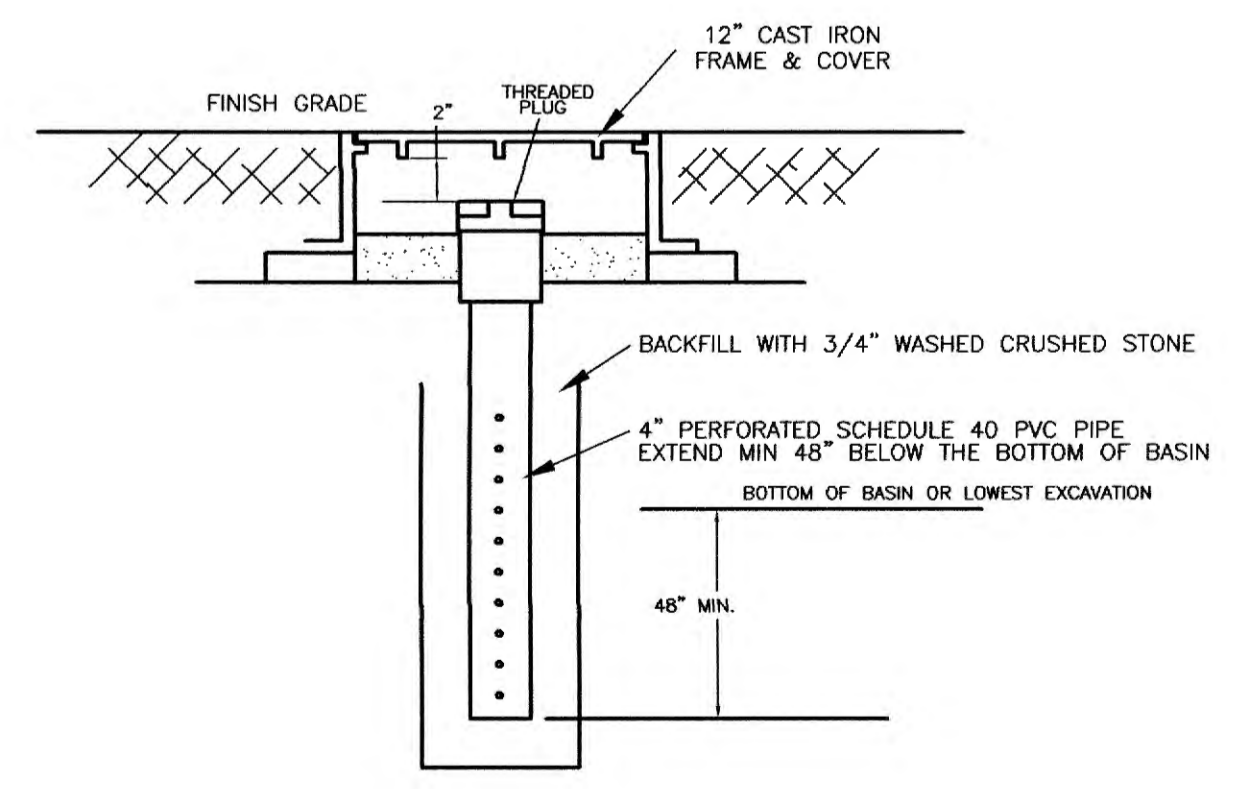
**INFILTRATION STRUCTURE**  
PROFILE VIEW  
(NOT TO SCALE)

THE CONTRACTOR SHALL REMOVE ANY TOP AND SUBSOIL FROM BENEATH THE PROPOSED STRUCTURE AND REPLACE IT WITH ADDITIONAL WASHED STONE  
THE DESIGN ENGINEER AND CONSERVATION COMMISSION DESIGNEE SHALL BE CONTACTED TO VIEW AND CONFIRM THE INSTALLATION  
THE LOCATION OF INFILTRATION BMPS MAY BE ADJUSTED IN THE FIELD TO ALLOW FOR SUBSURFACE CONDITIONS, AS APPROVED BY THE DESIGN ENGINEER. SYSTEM LOCATION MUST BE SHOWN ON AS-BUILT PLAN IF IT IS ADJUSTED



**PROFILE OF INFILTRATION/RETENTION STRUCTURE POND 11**  
SUBMIT SHOP DRAWINGS TO ENGINEER SHOWING ACTUAL SYSTEM CONFIGURATIONS

THE RETENTION/INFILTRATION STRUCTURES SHALL CONSIST OF PRECAST CONCRETE 8'X8' MODULES WITH AN INSIDE HEIGHT OF 5' AS SHOWN IN THE STORMWATER REPORT AND SHALL BE OPEN BOTTOM EXCEPT FOR THE INLET MODULE WHICH SHALL HAVE A PRECAST CONCRETE SLAB FLOOR TO ALLOW FOR POSSIBLE ADDITIONAL CLEANOUT. INLETS AND OUTLETS SHALL BE FACTORY CAST OR CORED INTO THE WALLS OF THE MODULES. SEE THE STORMWATER REPORT FOR CONFIGURATIONS AND DIMENSIONS OF THE SUBSURFACE POND 11.



**DETAIL OF MONITORING WELL FOR ALL INFILTRATION BASINS**  
INSTALLED IN LOCATIONS SHOWN ON PLANS  
(NOT TO SCALE)

- NOTES:**
1. THE MATERIALS, METHODS, AND WORKMANSHIP OF ALL SEWER, DRAIN, AND WATER PIPES PROPOSED HEREON, INCLUDING ALL WORK WITHIN THE PUBLIC STREETS, TRENCHES AND PAVEMENT PATCHES, SHALL COMPLY WITH THE APPLICABLE STANDARDS OF THE TOWN OF SHREWSBURY.
  2. UNLESS OTHERWISE NOTED, THE CONSTRUCTION MATERIALS DESCRIBED HEREIN REFER TO THE MASSACHUSETTS DOT, HIGHWAY DEPARTMENT, SPECIFICATIONS FOR HIGHWAYS AND BRIDGES.
  3. PAVEMENT SHALL BE HOT MIX ASPHALT CONCRETE, TYPE I, 1-1/2" TOP COURSE 3/8" AGGREGATE, OVER 2-1/2" DENSE BINDER, INTERMEDIATE AGGREGATE. (M3.11.00)
  4. CEMENT CONCRETE SHALL BE 4,000 PSI, 3/4" AGGREGATE, MIN 610 LBS CEMENT PER CY (M4.02.00)
  5. AREAS NOT SHOWN AS PAVEMENTS OR MULCH SHALL BE LOAMED AND SEEDED.
  6. DRAINAGE PIPE SHALL BE SDR35PVC FROM CATCH BASINS TO MANHOLES, AND HDPE ELSEWHERE.
  7. SOLID WASTE WILL BE STORED IN CLOSED CONTAINERS WITHIN THE FENCED ENCLOSURE.



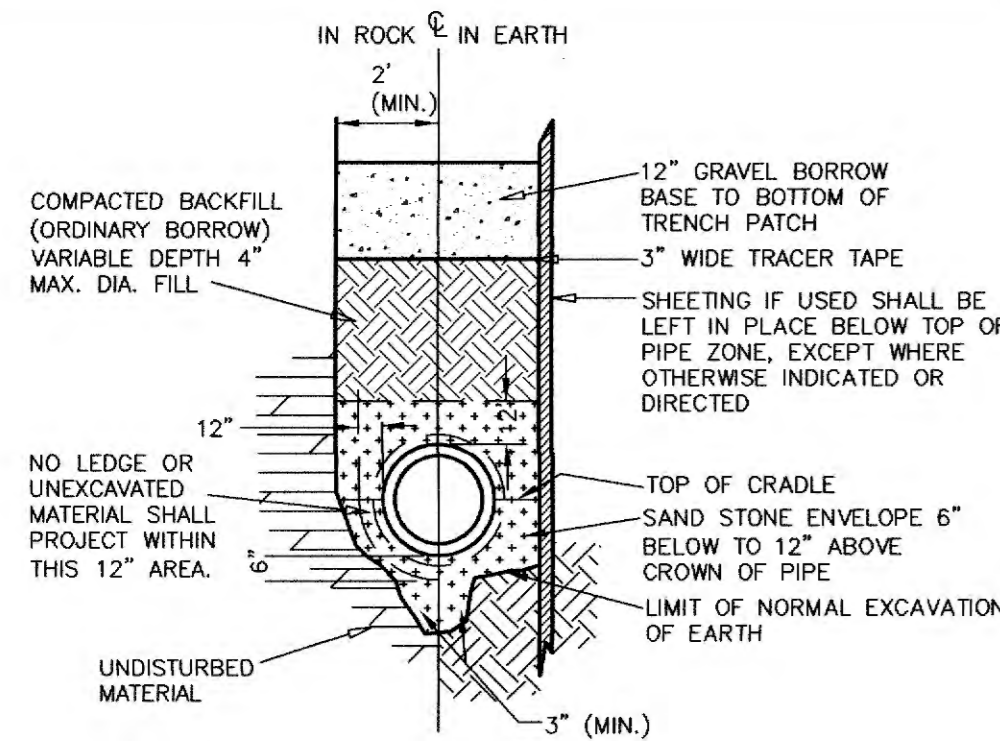
**THOMPSON-LISTON ASSOCIATES, INC.**  
Professional Engineers Professional Land Surveyors  
Erosion Control Specialists  
51 Main St. Boylston, MA, 01505  
info@tlamc.net (508) 869-6151

CLIENT:	115NORTHEAST	JOB NO.:	-
DATE:	8/22/2023	DWG NO.:	HOLDENSCURRENT
REVISIONS			
DATE:		DESCRIPTION	

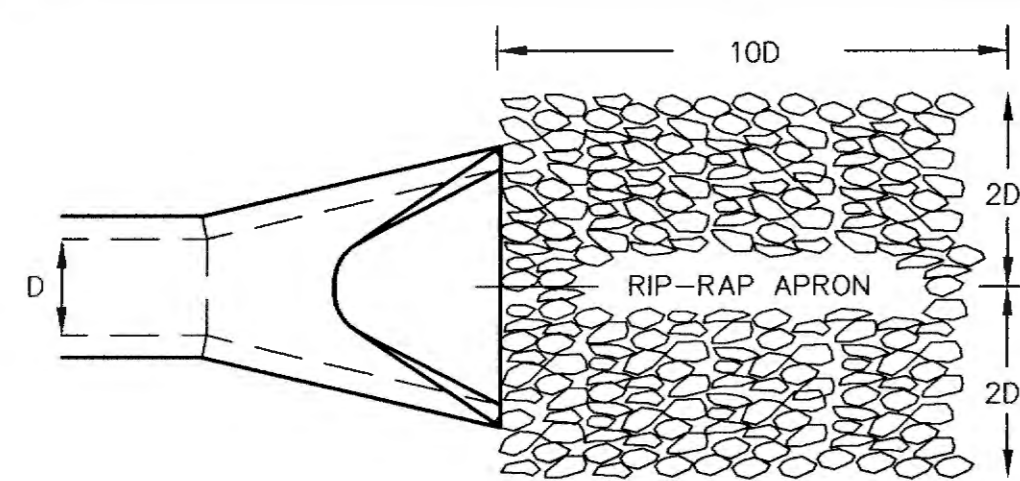
SCALE: AS NOTED

PLAN TO ACCOMPANY NOTICE OF INTENT FOR WORK PROPOSED IN **SHREWSBURY AND WORCESTER MASSACHUSETTS**  
PREPARED FOR OWNER:  
**115 NORTHEAST CUTOFF REALTY TRUST**



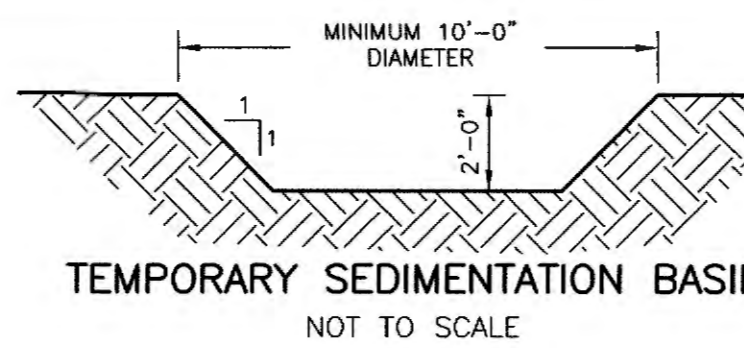


TYPICAL WATERLINE TRENCH SECTION  
ONE PIPE  
(NOT TO SCALE)



FLARED END SECTION  
WITH SCOUR PROTECTION  
(NOT TO SCALE)

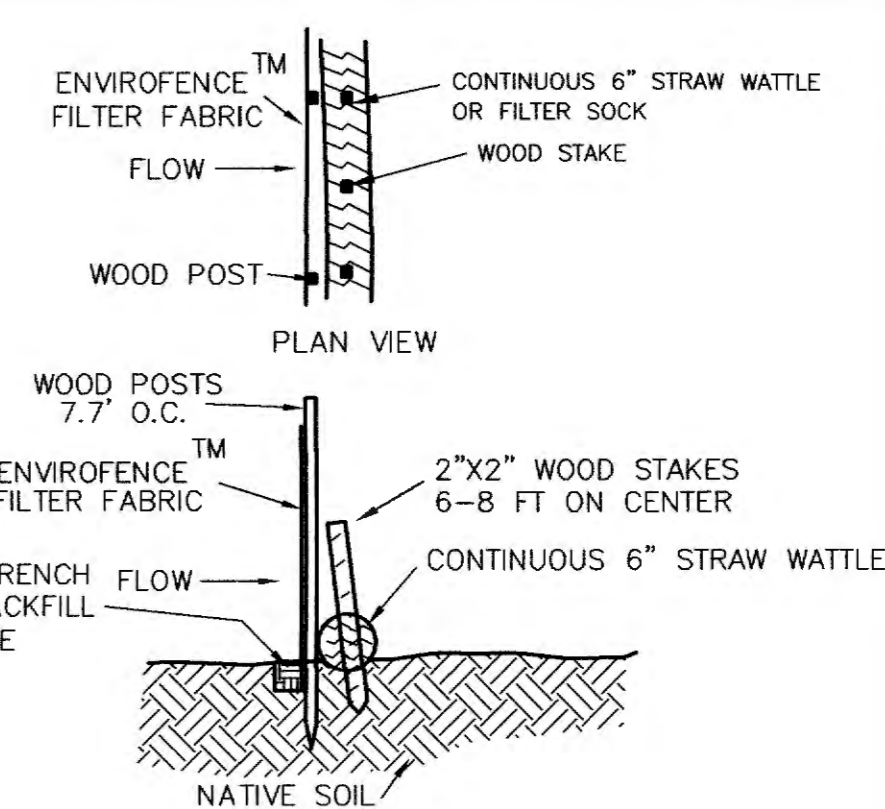
THE RIP RAP APRON SHALL CONSIST OF A LAYER OF STONE 12 INCHES IN THICKNESS OR MORE, PLACED UPON A BED OF SAND AND GRAVEL 6 INCHES IN THICKNESS. THE STONES SHALL BE SIZED SO THAT NOT LESS THAN 60 PERCENT SHALL HAVE ONE DIMENSION 12 INCHES OR MORE. THE STONES, AFTER BEING LAID, SHALL BE CAREFULLY CHINKED BY HAND TO MAKE A REASONABLY SMOOTH AND SHAPED SURFACE.



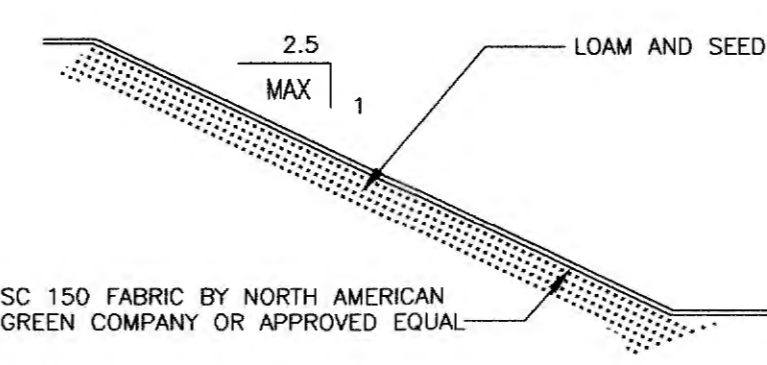
TEMPORARY SEDIMENTATION BASIN  
NOT TO SCALE



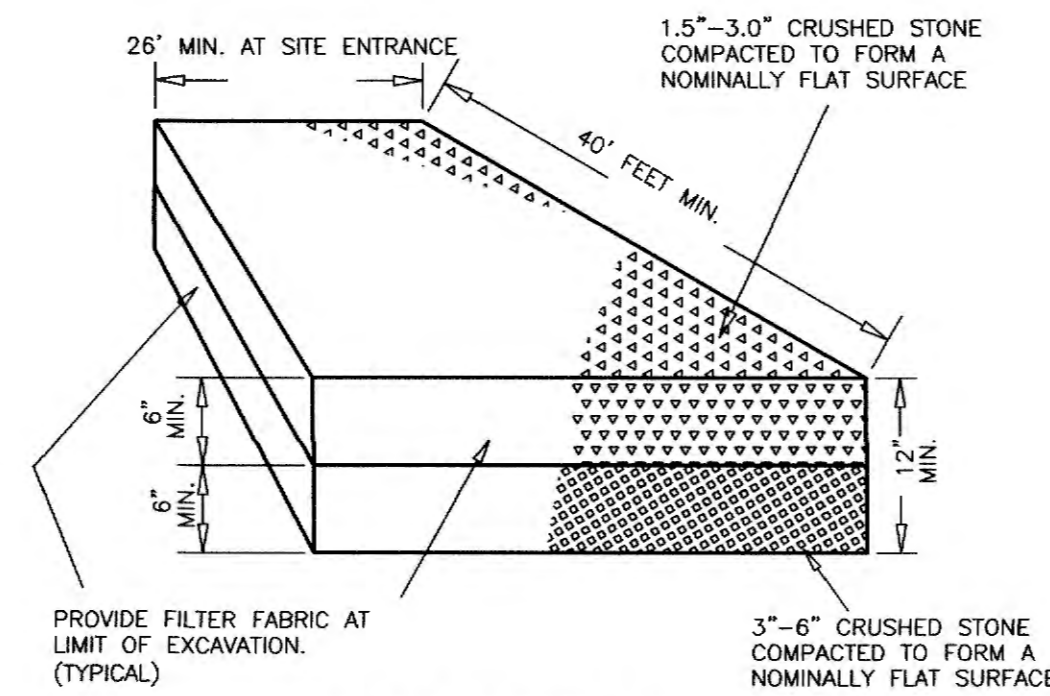
CATCH BASIN INLET PROTECTION  
(NOT TO SCALE)



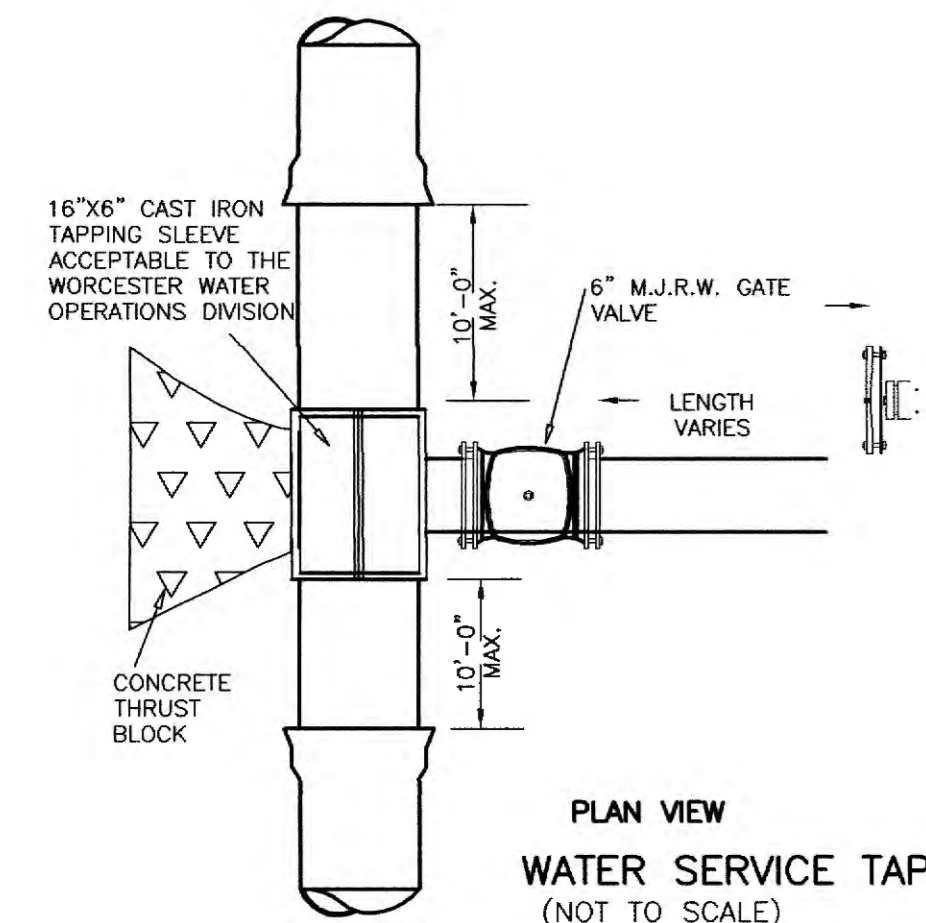
SEDIMENTATION CONTROL BARRIER WITH WATTLE  
(NOT TO SCALE)



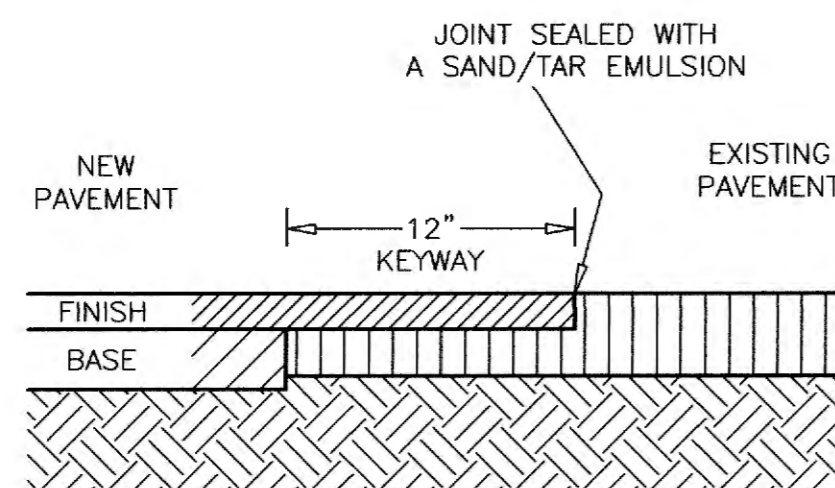
2.5:1 AND FLATTER SLOPE TREATMENT  
SLOPES SHALL NOT EXCEED 2.5:1  
(NOT TO SCALE)



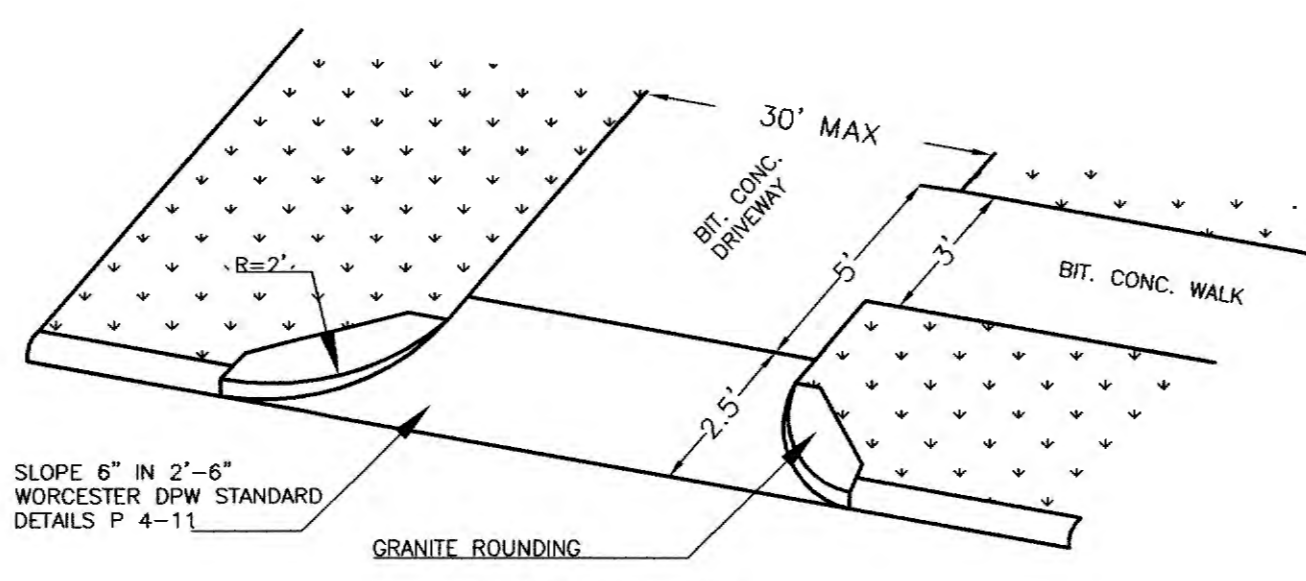
SITE ENTRANCE MAT  
(NOT TO SCALE)  
STREETS DIRECTLY ABUTTING THE PROPOSED PROJECT MUST BE SWEEPED DAILY WHEN HAULING IS IN PROGRESS.



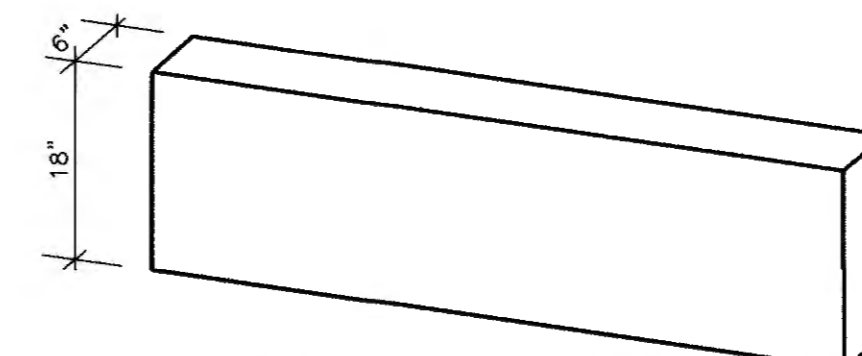
PLAN VIEW  
WATER SERVICE TAP  
(NOT TO SCALE)



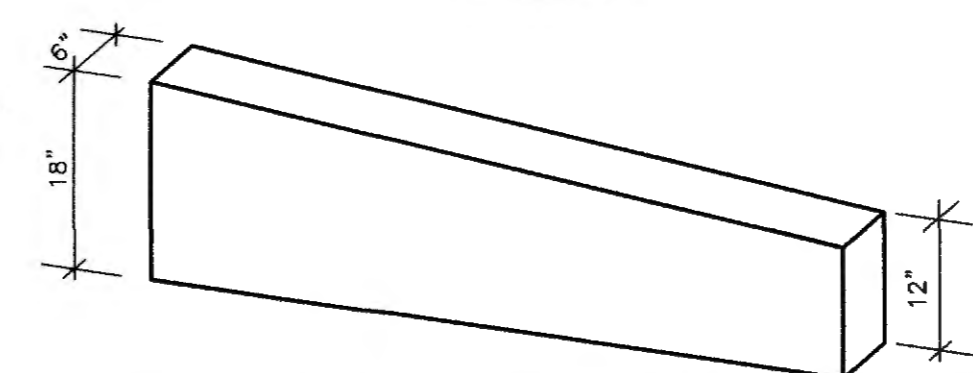
PAVEMENT BLEND DETAIL  
(NOT TO SCALE)



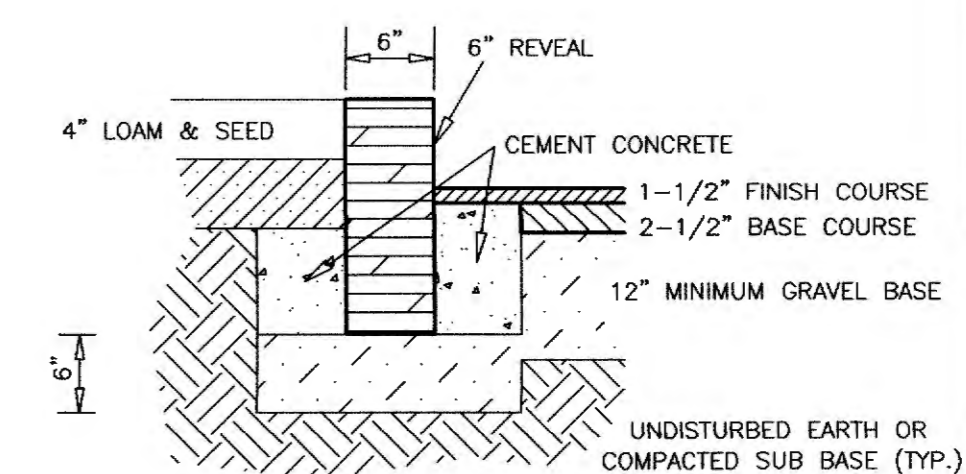
CURB RETURN  
(NOT TO SCALE)



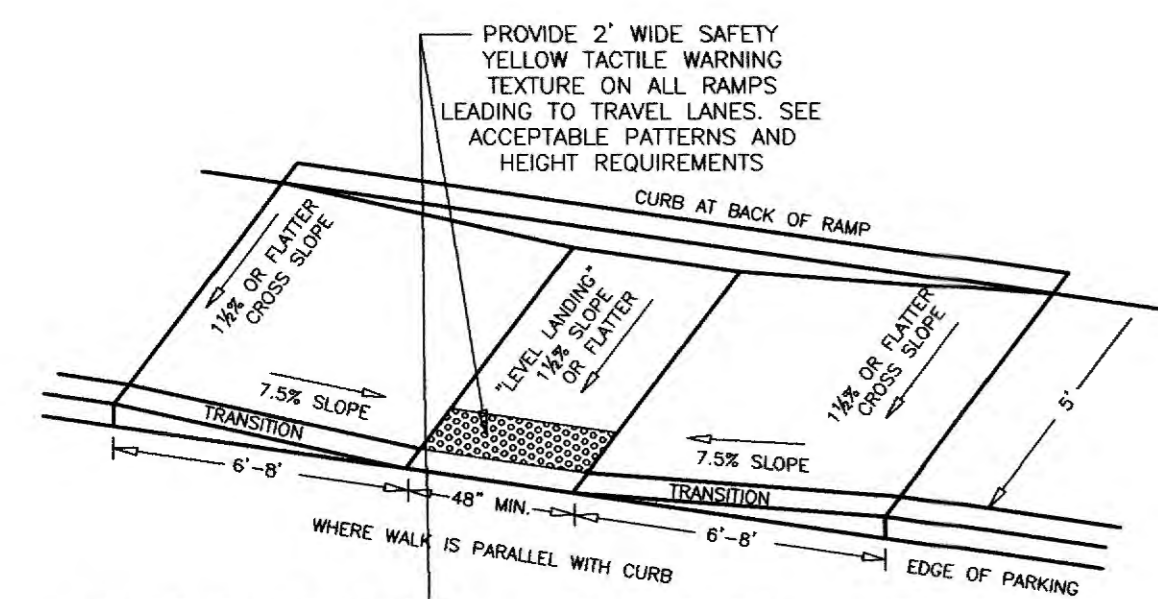
TYPICAL GRANITE CURB SECTION  
(NOT TO SCALE)



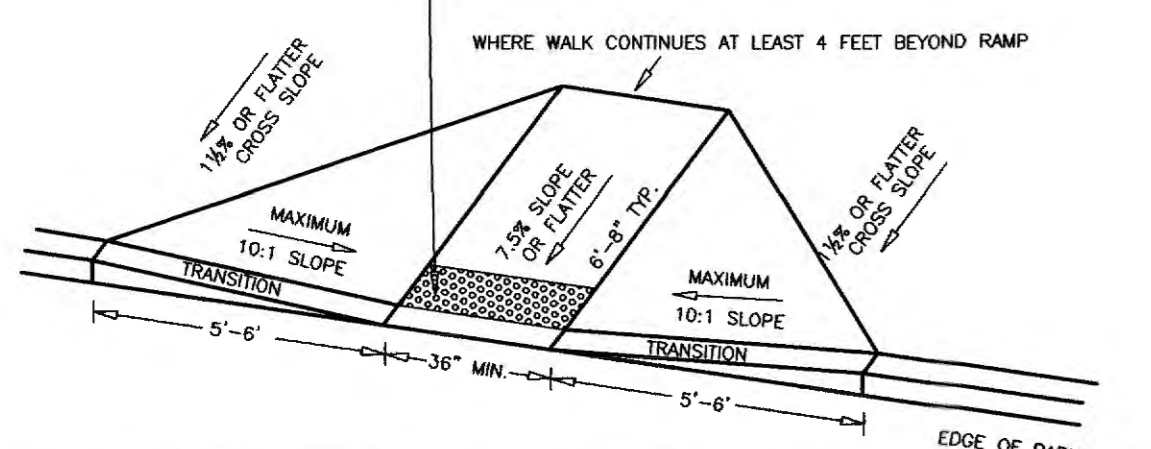
TYPICAL GRANITE CURB TRANSITION SECTION  
(NOT TO SCALE)



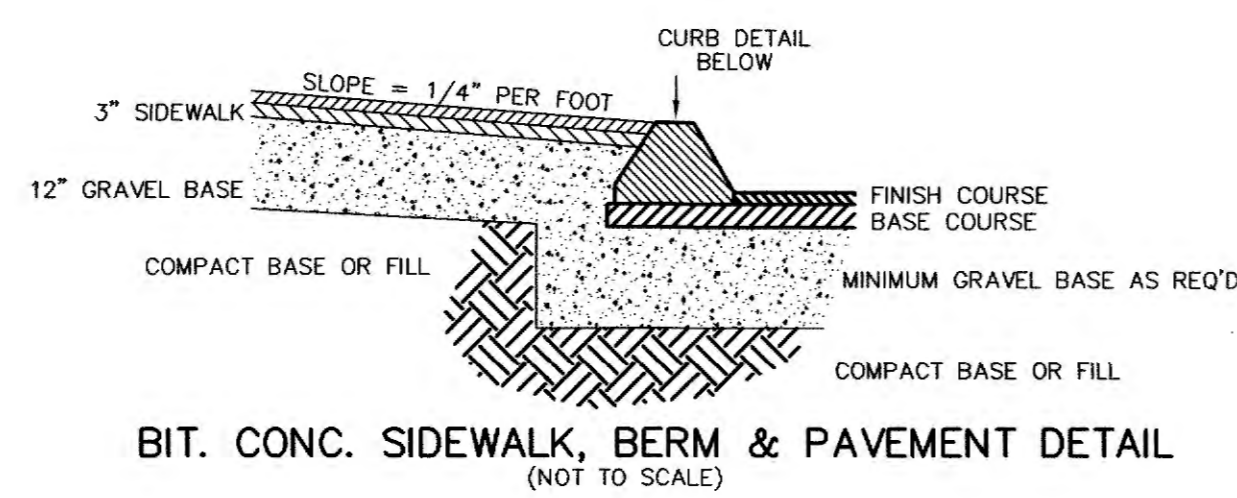
GRANITE CURB  
(NOT TO SCALE)



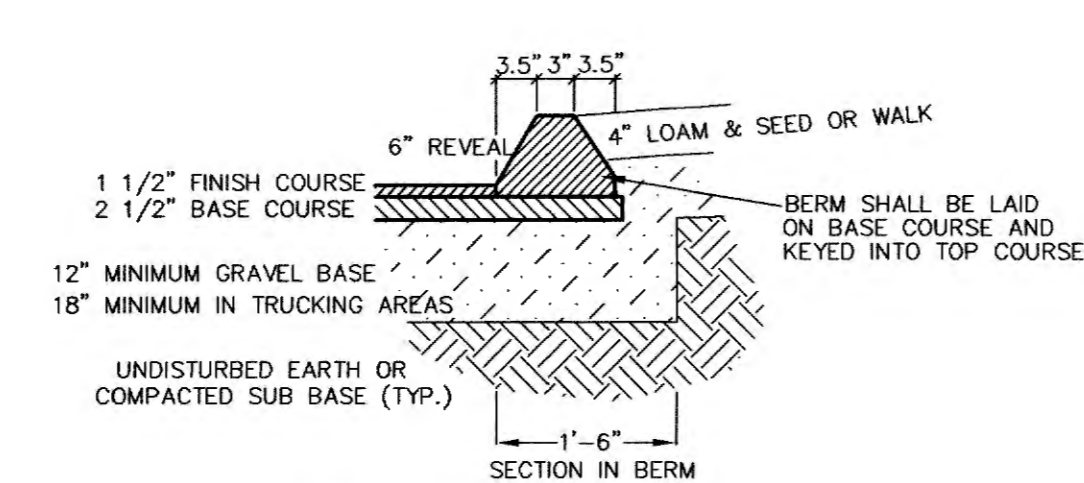
WHEELCHAIR RAMP - WALK PARALLEL TO CURB  
(NOT TO SCALE)



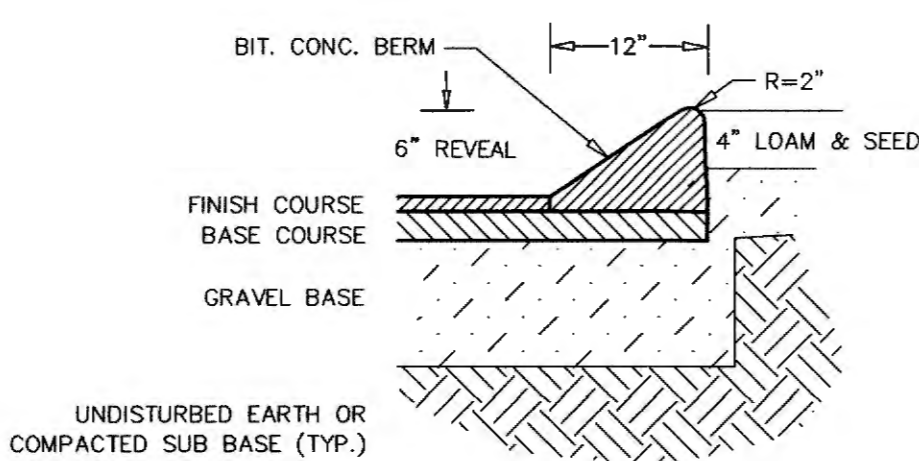
WHEELCHAIR RAMP - WALK PERPENDICULAR TO CURB  
(NOT TO SCALE)



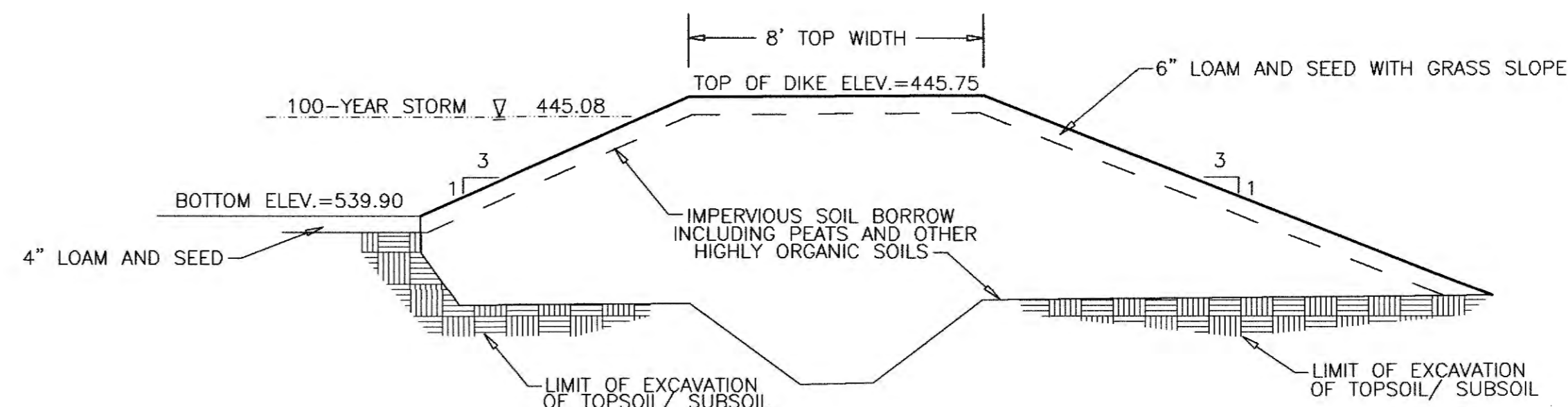
BIT. CONC. SIDEWALK, BERM & PAVEMENT DETAIL  
(NOT TO SCALE)



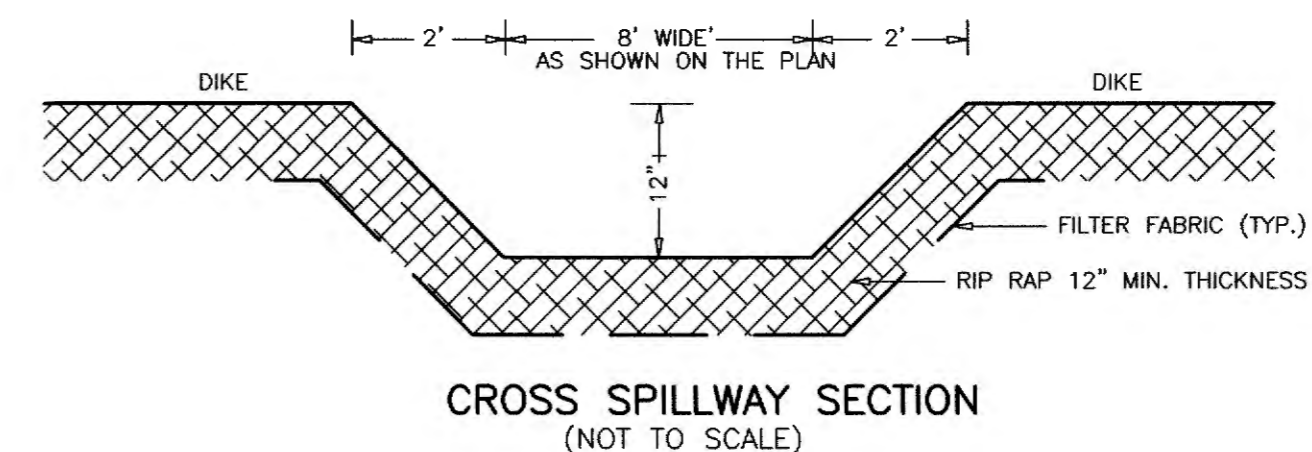
BIT. CONC. BERM  
(NOT TO SCALE)



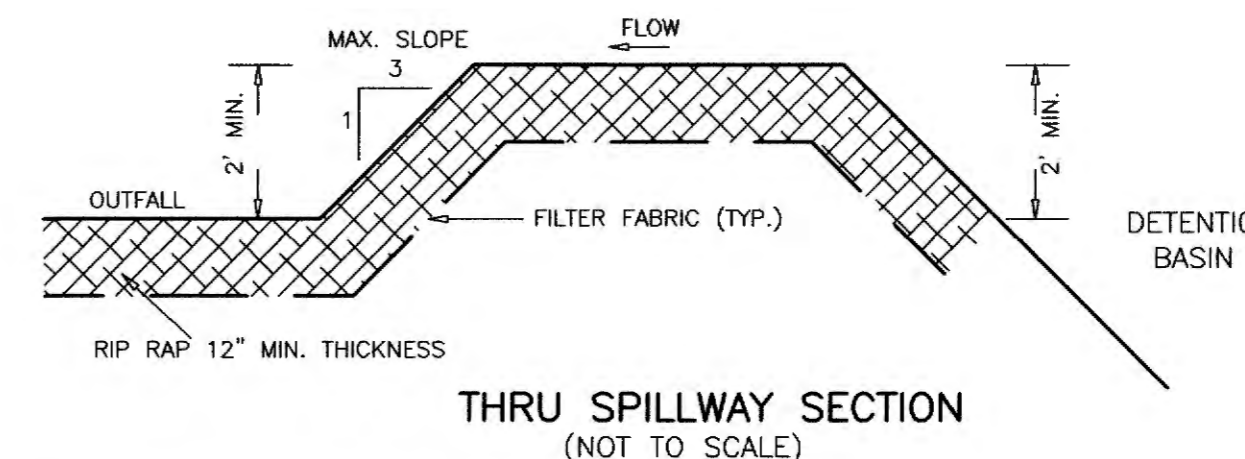
MODIFIED CAPE COD BERM  
(NOT TO SCALE)



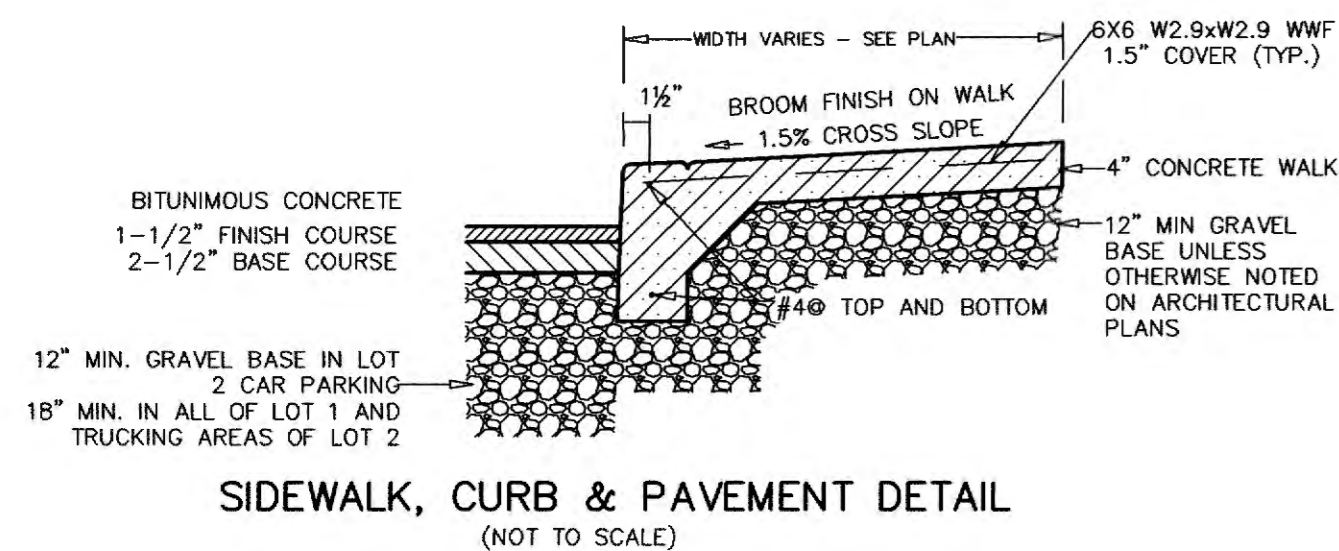
INFILTRATION BASIN DETAIL  
NOT TO SCALE



CROSS SPILLWAY SECTION  
(NOT TO SCALE)



THRU SPILLWAY SECTION  
(NOT TO SCALE)



SIDEWALK, CURB & PAVEMENT DETAIL  
(NOT TO SCALE)



**THOMPSON-LISTON ASSOCIATES, INC.**  
Professional Engineers Professional Land Surveyors  
Erosion Control Specialists  
51 Main St. Boylston, MA. 01505  
info@tlainc.net (508) 869-6151

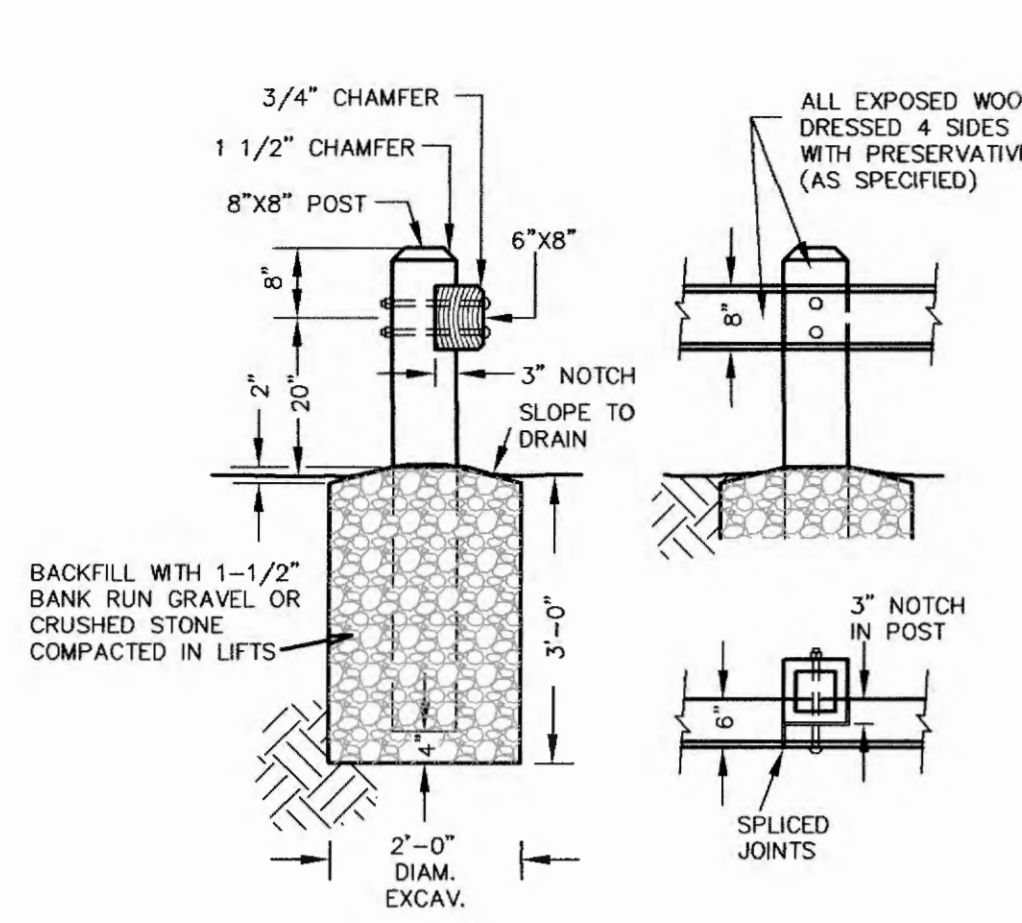
CLIENT:	115NORTHEAST	JOB NO.:	-
DATE:	8/22/2023	DWG NO.:	HOLDENSTCURRENT
REVISIONS			
DATE:		DESCRIPTION:	

SCALE: AS NOTED

PLAN TO COMPANY NOTICE OF INTENT FOR WORK PROPOSED IN SHREWSBURY AND WORCESTER MASSACHUSETTS PREPARED FOR OWNER: 115 NORTHEAST CUTOFF REALTY TRUST

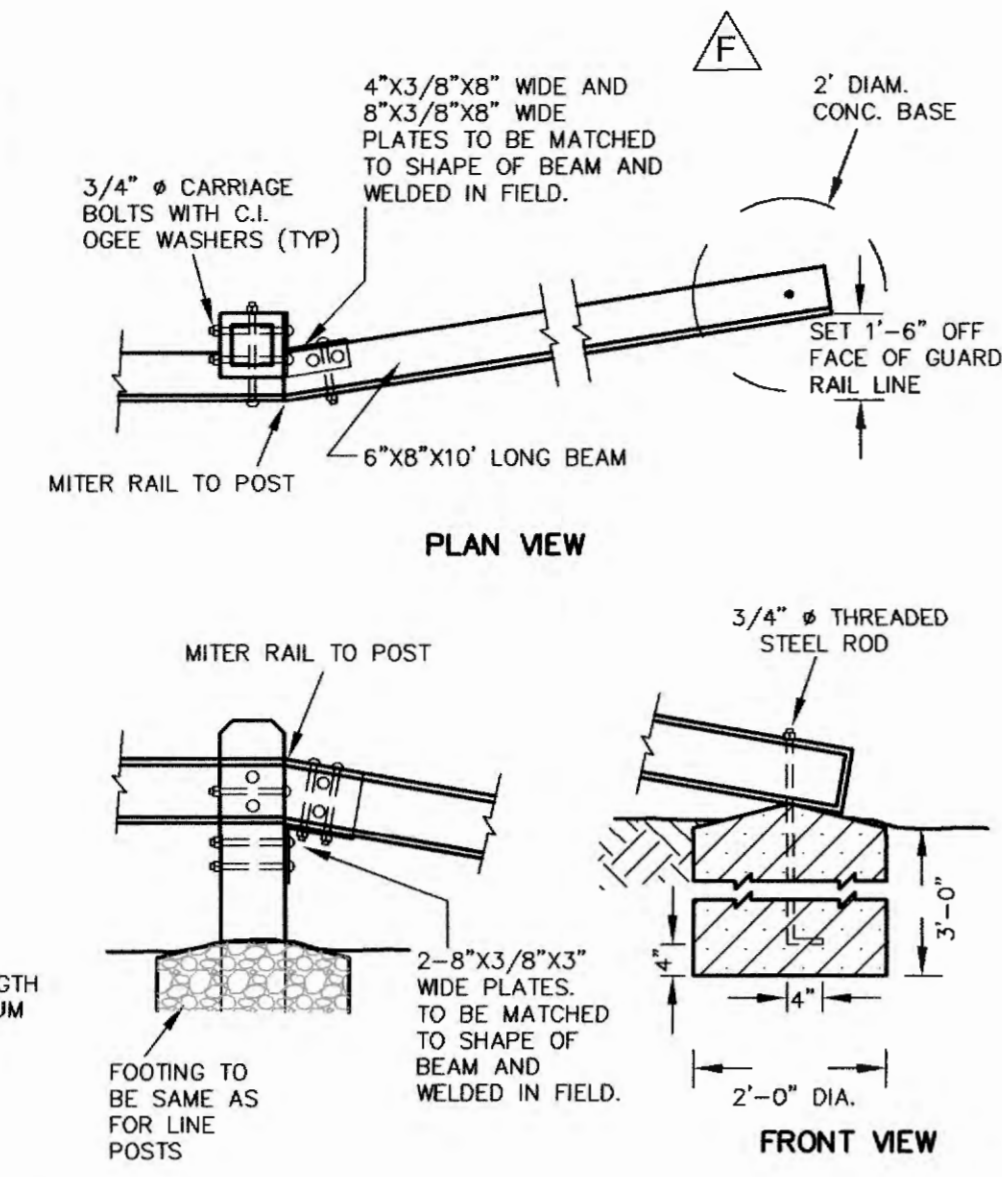
SHEET C6.2 DETAILS



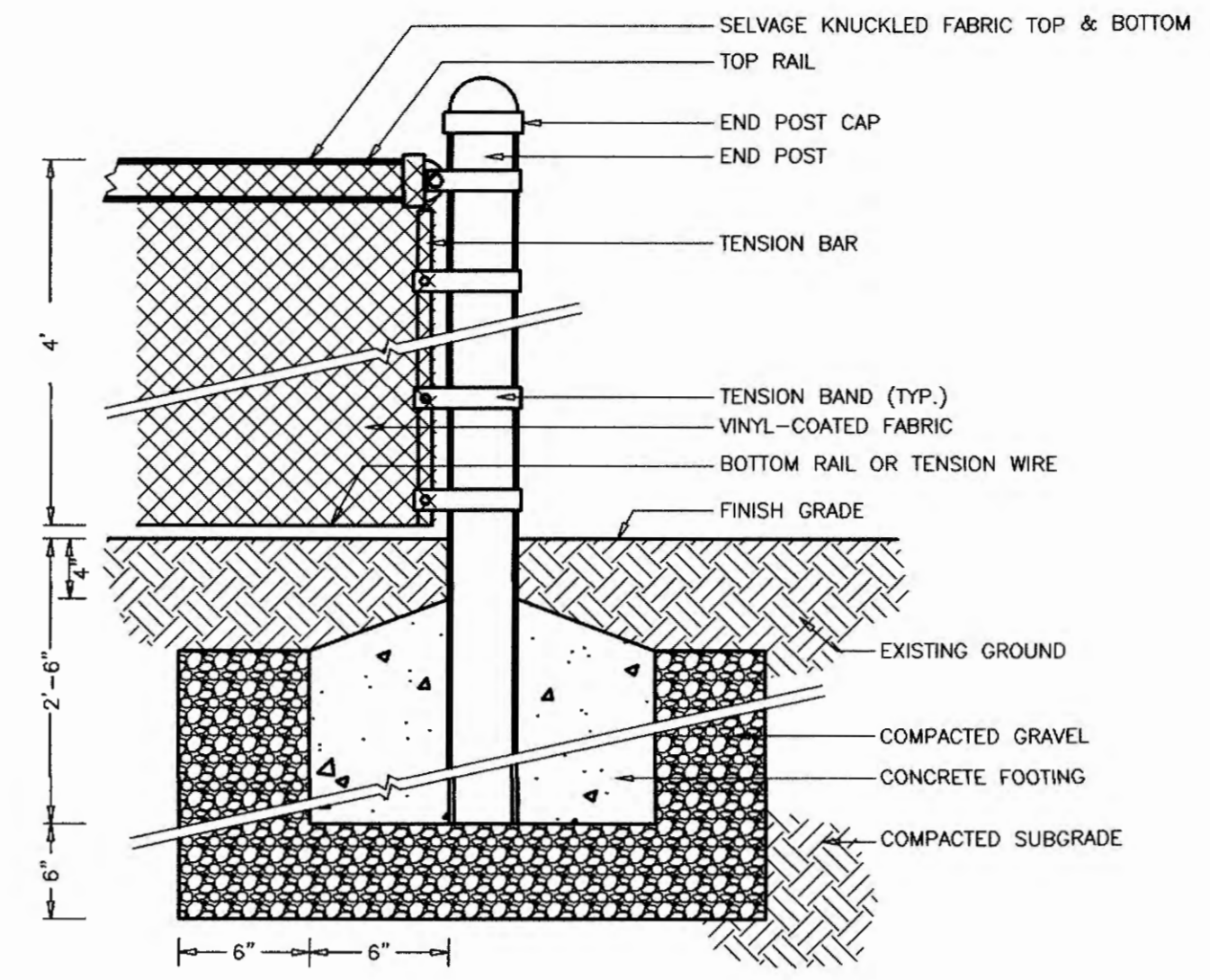


- NOTES:
1. POST SPACING OF 7'-4" ALLOWS USE OF 8'-0" LENGTH TIMBER RAILS FOR CONSTRUCTION. USE THIS AS MAXIMUM SPACING.
  2. FOR POSTS OVER CULVERTS USE 2' DIAMETER AND 2'-6" DEEP.
  3. NICK THREADS ON BOLTS.
  4. USE C.I. OGEE WASHERS WITH ALL NUTS.

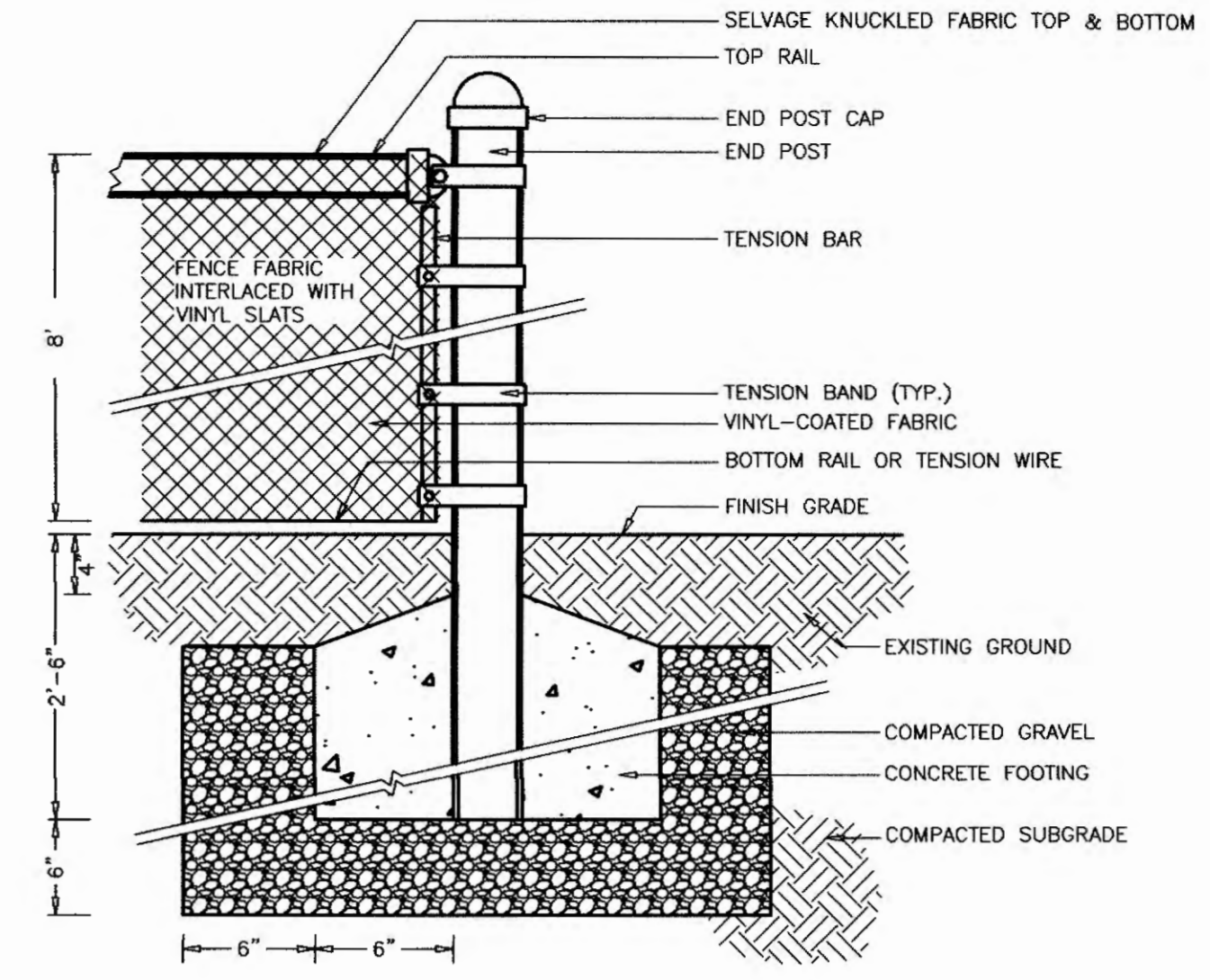
**TIMBER GUARD RAIL**  
NOT TO SCALE



**PLAN VIEW**  
**FRONT VIEW**



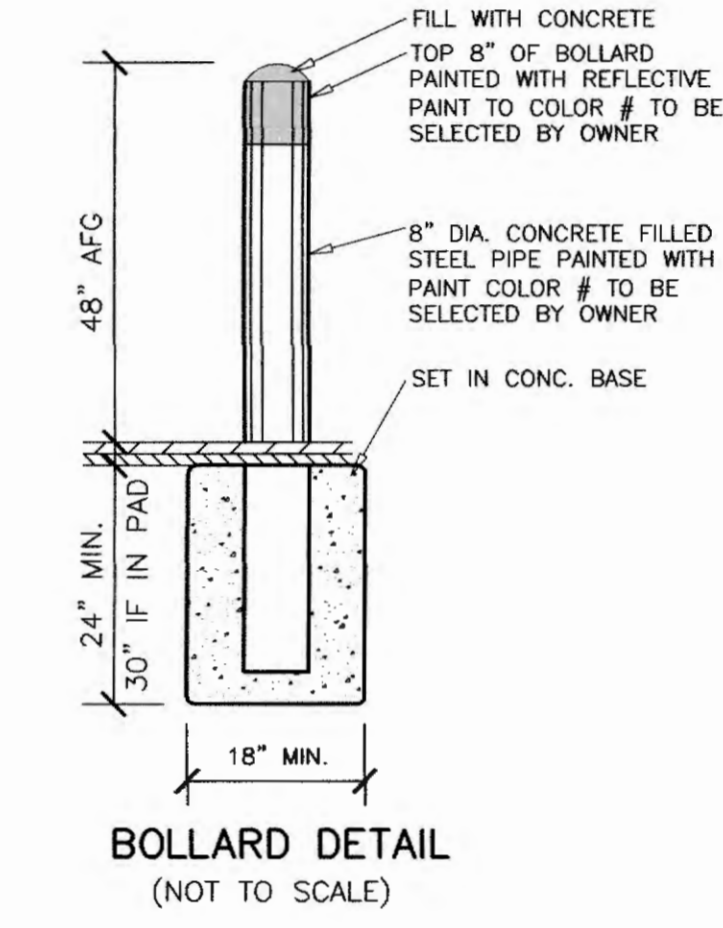
**4' VINYL-COATED CHAINLINK FENCE**  
(NOT TO SCALE)  
CONTRACTOR SHALL SUBMIT DETAILS TO ENGINEER FOR APPROVAL.  
VINYL COATINGS & SLATS SHALL BE BLACK OR DARK GREEN COLOR.



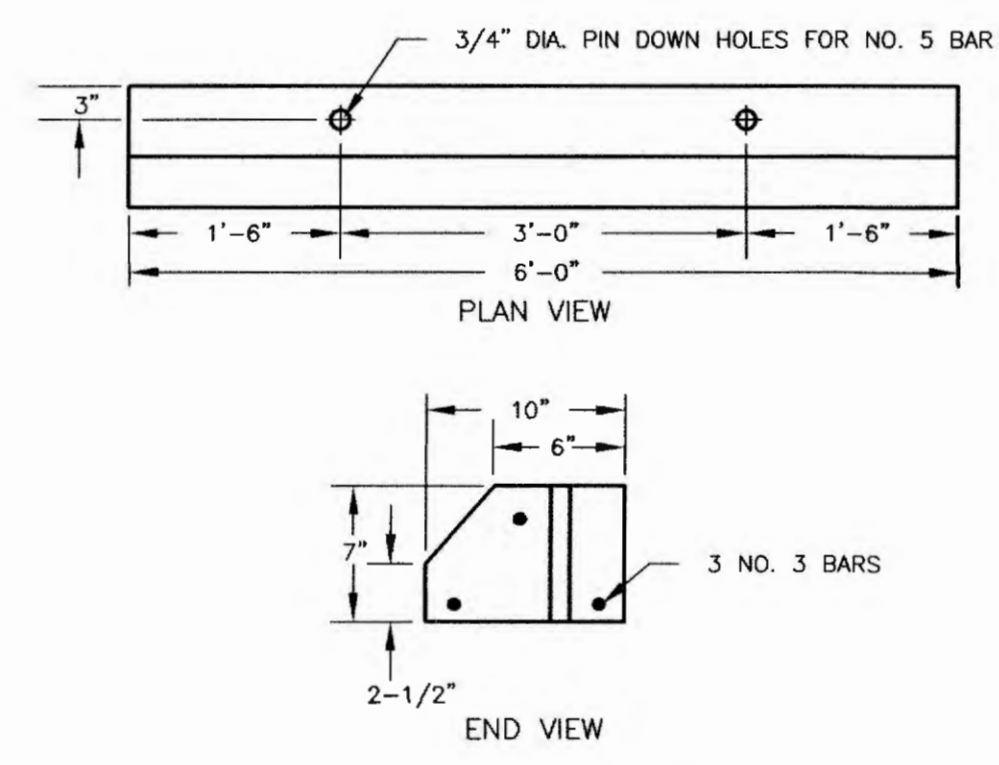
**8' VINYL-COATED CHAINLINK FENCE WITH SLATS**  
(NOT TO SCALE)  
CONTRACTOR SHALL SUBMIT DETAILS TO ENGINEER FOR APPROVAL.  
VINYL COATINGS & SLATS SHALL BE BLACK OR DARK GREEN COLOR.

**CHAINLINK FENCE NOTES:**

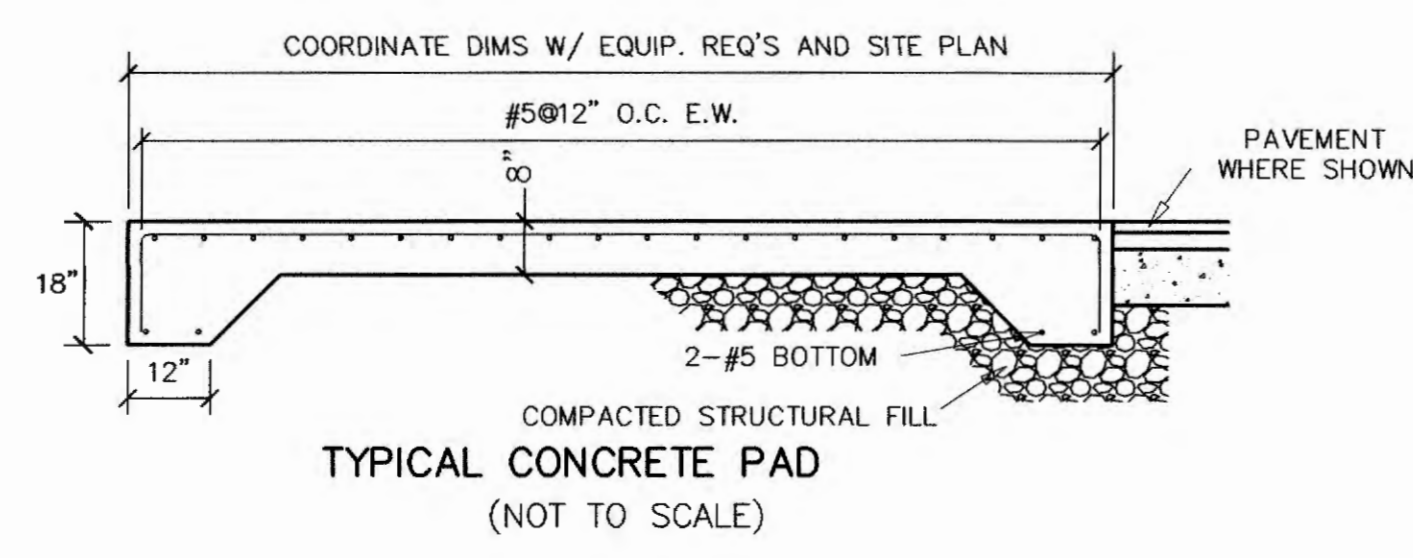
- 1.) END, CORNER, AND GATE POSTS SHALL BE 2.875" (~3") O.D. TYPE 'B' STEEL PIPE (ALLIED 'SS40' OR WHEATLAND 'WT-40').
- 2.) LINE POSTS SHALL BE 2.375" (~2 1/2") O.D. TYPE 'B' STEEL PIPE (ALLIED 'SS40' OR WHEATLAND 'WT-40') ON ALL FENCES.
- 3.) TOP RAILS REQUIRED ON 8' HIGH FENCES SHALL BE 1.660" (~1 5/8") O.D. TYPE 'B' STEEL PIPE (ALLIED 'SS40' OR WHEATLAND 'WT-40').
- 4.) BOTTOM RAILS REQUIRED ON 8' HIGH FENCES SHALL BE 1.660" (~1 5/8") O.D. TYPE 'B' STEEL PIPE (ALLIED 'SS40' OR WHEATLAND 'WT-40').
- 5.) CORNER BRACING & TRUSSING REQUIRED ON 8' HIGH FENCES.
- 6.) ALL FENCE FABRIC SHALL BE 2" MESH, ZINC COATED (GALVANIZED) STEEL, 9 GAUGE CORE (8 GAUGE FINISH), WITH THERMALLY FUSED & BONDED VINYL (PVC) COATING. FABRIC EDGES SHALL BE SELVAGE KNUCKLED.
- 7.) ALL FENCE POSTS, RAILS, CAPS, HARDWARE, AND MESH FABRIC SHALL BE ZINC COATED (GALVANIZED) STEEL WITH THERMALLY FUSED & BONDED VINYL (PVC) COATING.
- 8.) FENCE POST SPACING SHALL BE 10' O.C. (MAXIMUM).
- 9.) 8' FENCE FABRIC SHALL BE INTERLACED WITH VINYL SLATS. SLATS SHALL BE TAMPER RESISTANT DESIGN. CONTRACTOR SHALL SUBMIT SLAT DETAILS TO ENGINEER FOR APPROVAL.
- 10.) INSTALL CONCRETE FOOTINGS AT ENDS, CORNERS, AND GATE POSTS ONLY.
- 11.) REPAIR THE GROUND SURFACE TO ORIGINAL CONDITION.



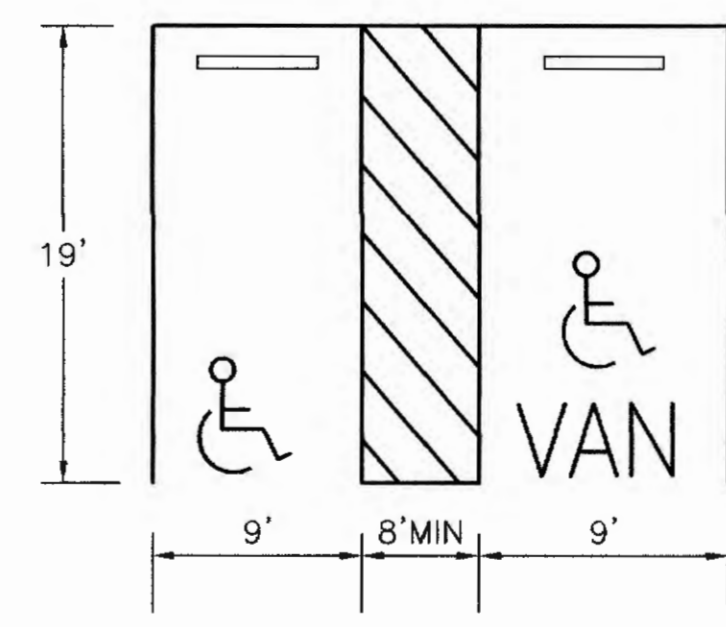
**BOLLARD DETAIL**  
(NOT TO SCALE)



**PRECAST CONCRETE WHEEL STOP**  
INSTALL ONE AT EACH ACCESSIBLE PARKING SPACE  
NOT TO SCALE



**TYPICAL CONCRETE PAD**  
(NOT TO SCALE)

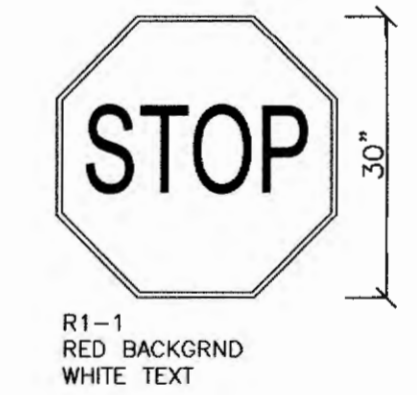


ACCESSIBLE SPACES SHALL BE CONSTRUCTED IN ACCORDANCE WITH 521CMR, THE ARCHITECTURAL ACCESS BOARD REGULATIONS. THE SLOPE IN ANY DIRECTION WITHIN ACCESSIBLE SPACES AND AISLES SHALL BE LESS THAN 2%.

**ACCESSIBLE SPACES**  
(NOT TO SCALE)

CONTRACTOR SHALL SUBMIT A DIMENSIONED DRAWING OF THE STENCILS THAT ARE PROPOSED TO BE USED.

TYPICAL DIMENSIONS FOR RECT. SIGNS



NOTES:  
ALL TRAFFIC CONTROL SIGNS SHALL BE PERMANENTLY LOCATED AT A HEIGHT OF NOT LESS THAN SEVEN (7) FEET TO THE BOTTOM OF THE SIGN.

ALL HANDICAP PARKING SIGNS SHALL BE LOCATED AT THE HEAD OF EACH SPACE AND NO MORE THAN TEN FEET AWAY FROM THE SPACE. SIGNS SHALL BE MOUNTED ON NOMINAL 2"x2" GALVANIZED STEEL POSTS. SIGNS SHALL BE PERMANENTLY LOCATED AT A HEIGHT OF NOT LESS THAN FIVE (5) FEET NOR MORE THAN EIGHT FEET TO THE TOP OF THE SIGN.

**TRAFFIC AND PARKING SIGNS**  
(NOT TO SCALE)



**THOMPSON-LISTON ASSOCIATES, INC.**  
Professional Engineers Professional Land Surveyors  
Erosion Control Specialists  
51 Main St. Boylston, MA, 01505  
info@tlainc.net (508) 869-6151

CLIENT: <b>115NORTHEAST</b>	JOB NO. -
DATE: <b>8/22/2023</b>	DWG NO. <b>HOLDENSTCURRENT</b>

REVISIONS	
DATE:	DESCRIPTION

SCALE: AS NOTED

PLAN TO ACCOMPANY NOTICE OF INTENT FOR WORK PROPOSED IN SHREWSBURY AND WORCESTER MASSACHUSETTS PREPARED FOR OWNER: 115 NORTHEAST CUTOFF REALTY TRUST